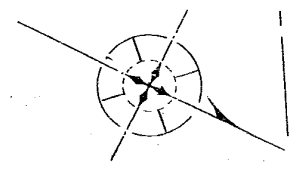
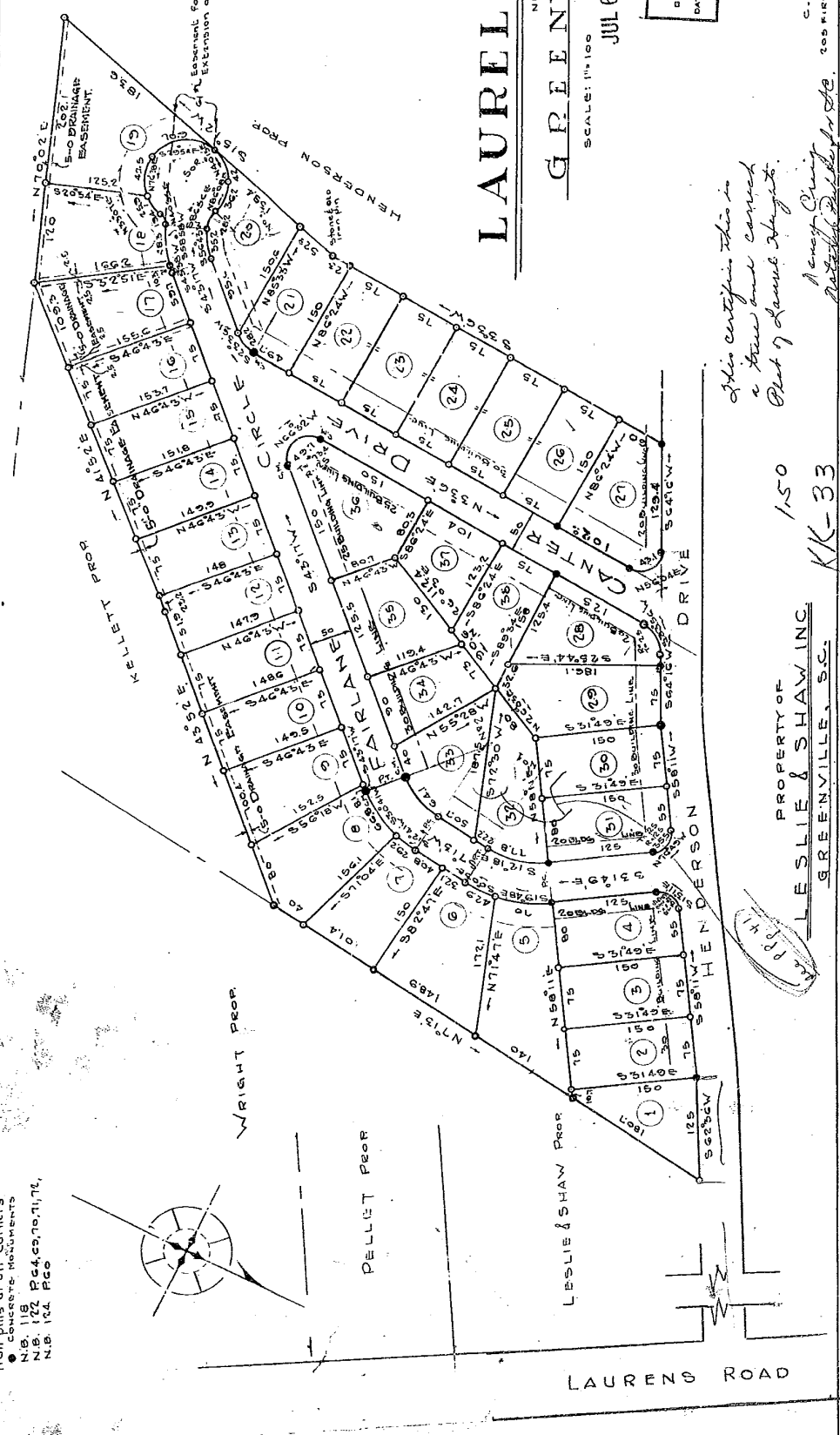


# Plat Book-KK-Page 33 A

Iron pins at all corners  
 ● center monuments  
 N.B. 172 P&C, no. 11, 72,  
 N.B. 164 P&C



CURVE DATA	
CURVE	DATA
A	T D L L C
10174	500 500 113.58 117.41 12.74
10175	500 500 113.58 117.41 12.74
10176	500 500 113.58 117.41 12.74
10177	500 500 113.58 117.41 12.74
10178	500 500 113.58 117.41 12.74
10179	500 500 113.58 117.41 12.74
10180	500 500 113.58 117.41 12.74
10181	500 500 113.58 117.41 12.74
10182	500 500 113.58 117.41 12.74
10183	500 500 113.58 117.41 12.74
10184	500 500 113.58 117.41 12.74
10185	500 500 113.58 117.41 12.74
10186	500 500 113.58 117.41 12.74
10187	500 500 113.58 117.41 12.74
10188	500 500 113.58 117.41 12.74
10189	500 500 113.58 117.41 12.74
10190	500 500 113.58 117.41 12.74
10191	500 500 113.58 117.41 12.74
10192	500 500 113.58 117.41 12.74
10193	500 500 113.58 117.41 12.74
10194	500 500 113.58 117.41 12.74
10195	500 500 113.58 117.41 12.74
10196	500 500 113.58 117.41 12.74
10197	500 500 113.58 117.41 12.74
10198	500 500 113.58 117.41 12.74
10199	500 500 113.58 117.41 12.74
10200	500 500 113.58 117.41 12.74



**LAUREL HEIGHTS**  
 NEAR  
**GREENVILLE, S.C.**  
 ALLIE FARRINGTON  
 A.M.C.  
 SCALE: 1" = 100' APRIL 1956  
 JUL 6-1956

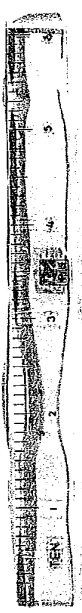
FINAL PLAN APPROVED  
 GREENVILLE CITY PLANNING & ZONING COMMISSION  
 DATE 6-4-56 BY *[Signature]*  
 SECRETARY OF COMMISSION

C. C. JOHNSON ASSOCIATES  
 205 FIRST FEDERAL SAVINGS LOAN BUILDING  
 GREENVILLE, S.C.

*This certifies this is  
 a true and correct  
 Plat of Laurel Heights.*  
*[Signature]*  
*[Signature]*

1-50  
 KK-33

PROPERTY OF  
**LESLIE & SHAW INC.**  
 GREENVILLE, S.C.



17351  
 MM 6 July 1956  
*[Signature]*