



Country Lane Tract

JenksIncRealty

Tract Size:	18.05+/- Acres
Price:	\$7,700/ac
Zoning:	None
TID #:	990000021
Location:	Laurens County
Utilities:	Power, phone; Well and Septic required

Recreational or estate property bordering a tributary of North Rabon Creek. The property has paved frontage on Country Lane. Nice hardwoods at the front of the tract, with natural regeneration towards the back. It could easily be cleared for pasture. Wonderful hilltop house site with panoramic views as you move back on the property towards the creek. Located in the Greenpond Road area, 10 minutes from the Fairview Road retail district, and just 30 minutes to downtown Greenville.



Call John Stillwell 864-414-1879
www.jenksinrealty.com

Country Lane Tract



JenksIncRealty



Wonderful view from potential house site



Frontage on Country Lane



Tributary of North Rabon Creek

Call John Stillwell 864-414-1879
www.jenksincrealty.com



Country Lane Tract

JenksIncRealty

Property located on Country Lane, approx. 1 mile East of Greenpond Road via Cooley Road



Call John Stillwell 864-414-1879

www.jenksincrealty.com



Country Lane Tract

JenksIncRealty

Property located on Country Lane, approx. 1 mile East of
Greenpond Road via Cooley Road



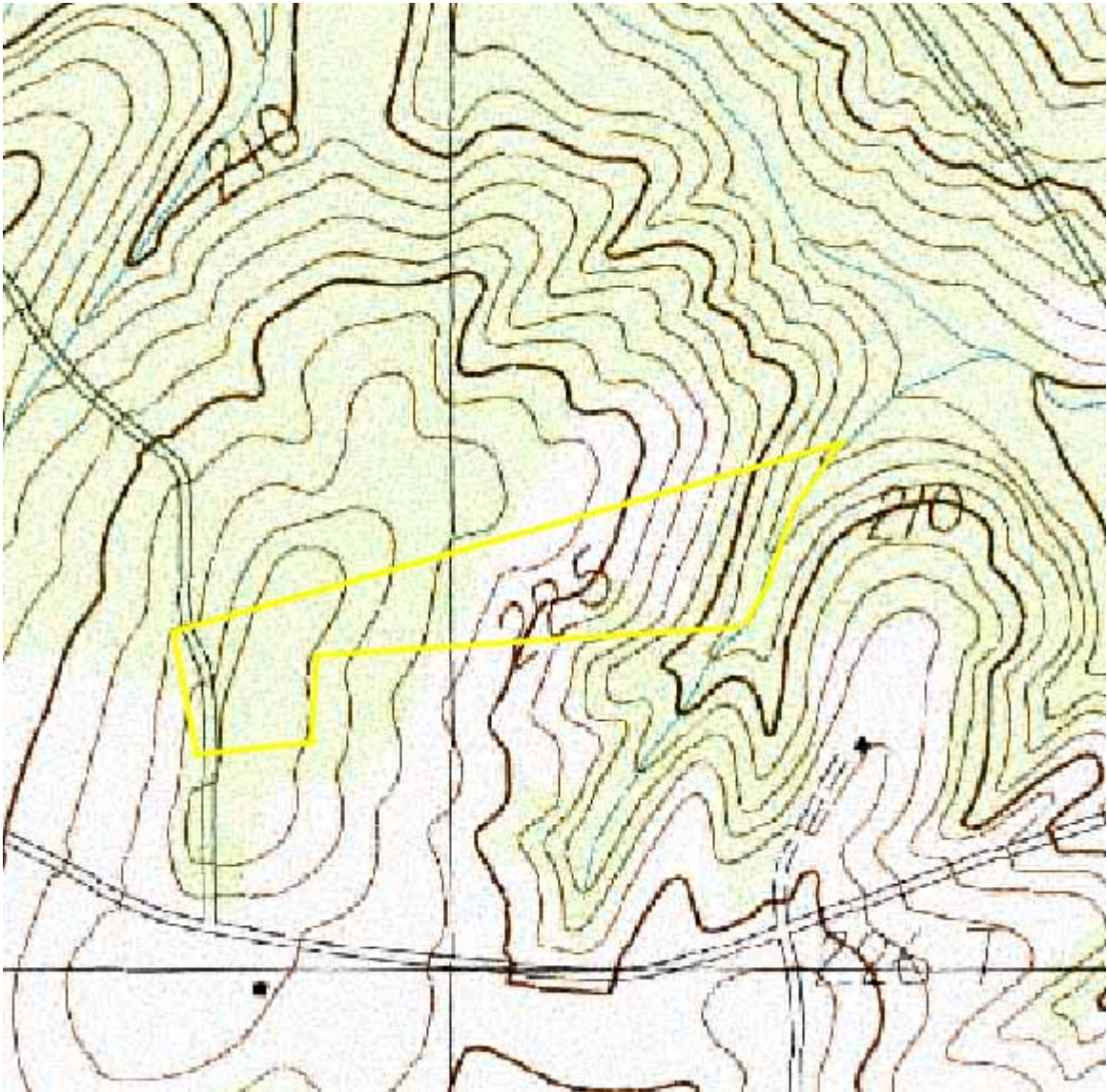
Boundary lines are an approximation. Jenks Inc. Realty makes no guarantees to their accuracy. Buyer should verify all information on utilities, boundaries, etc. to their satisfaction.

Call John Stillwell 864-414-1879
www.jenksincrealty.com



Country Lane Tract

JenksIncRealty



Boundary lines are an approximation. Jenks Inc. Realty makes no guarantees to their accuracy. Buyer should verify all information on utilities, boundaries, etc. to their satisfaction.

Call John Stillwell 864-414-1879
www.jenksincrealty.com