



Gibson Mtn Tract

Tax Map #- 044-00-02-018

JenksIncRealty

Tract Size: 26.75 acres

Price: \$227,375.00

Zoning: None

Utilities: Power

Location: North Little River Road, Oconee County

Excellent recreational tract in Northwest Oconee County. The property contains various hardwoods and a sloping topography. There are incredible views of the Blue Ridge mountains with a perfect home build site for any estate plans. Beautiful mountain stream borders the northern boundary of the property. Abundant deer, turkey and other wildlife habitat provide ample game for hunters of all types. Less than 5 miles from Hwy 11. Perfect for the person looking for mountain living without being too far away.



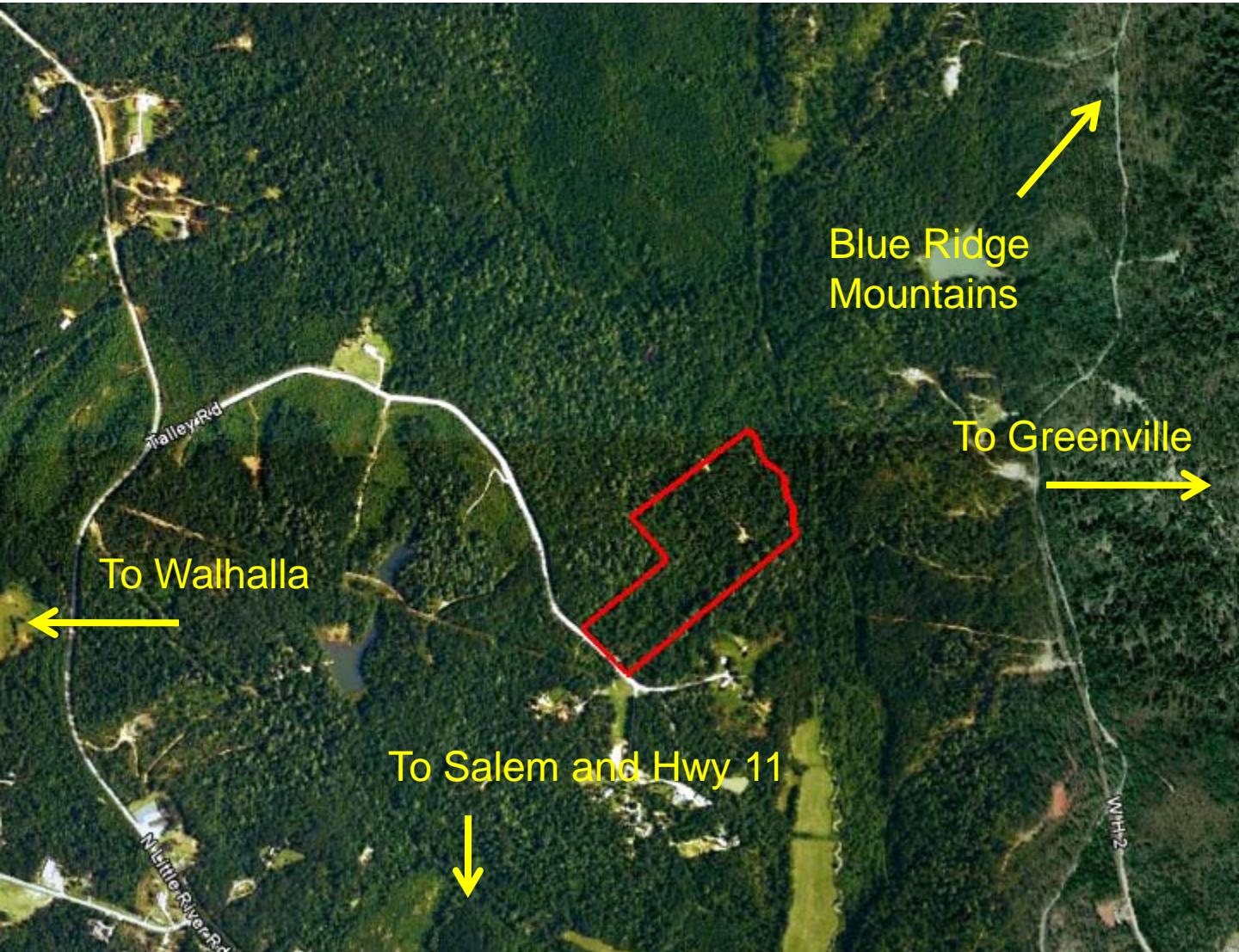
Offered by Jon Tompkins 864-395-0322 or jt@jenksincrealty.com



Gibson Mtn Tract

Tax Map #- 044-00-02-018

JenksIncRealty



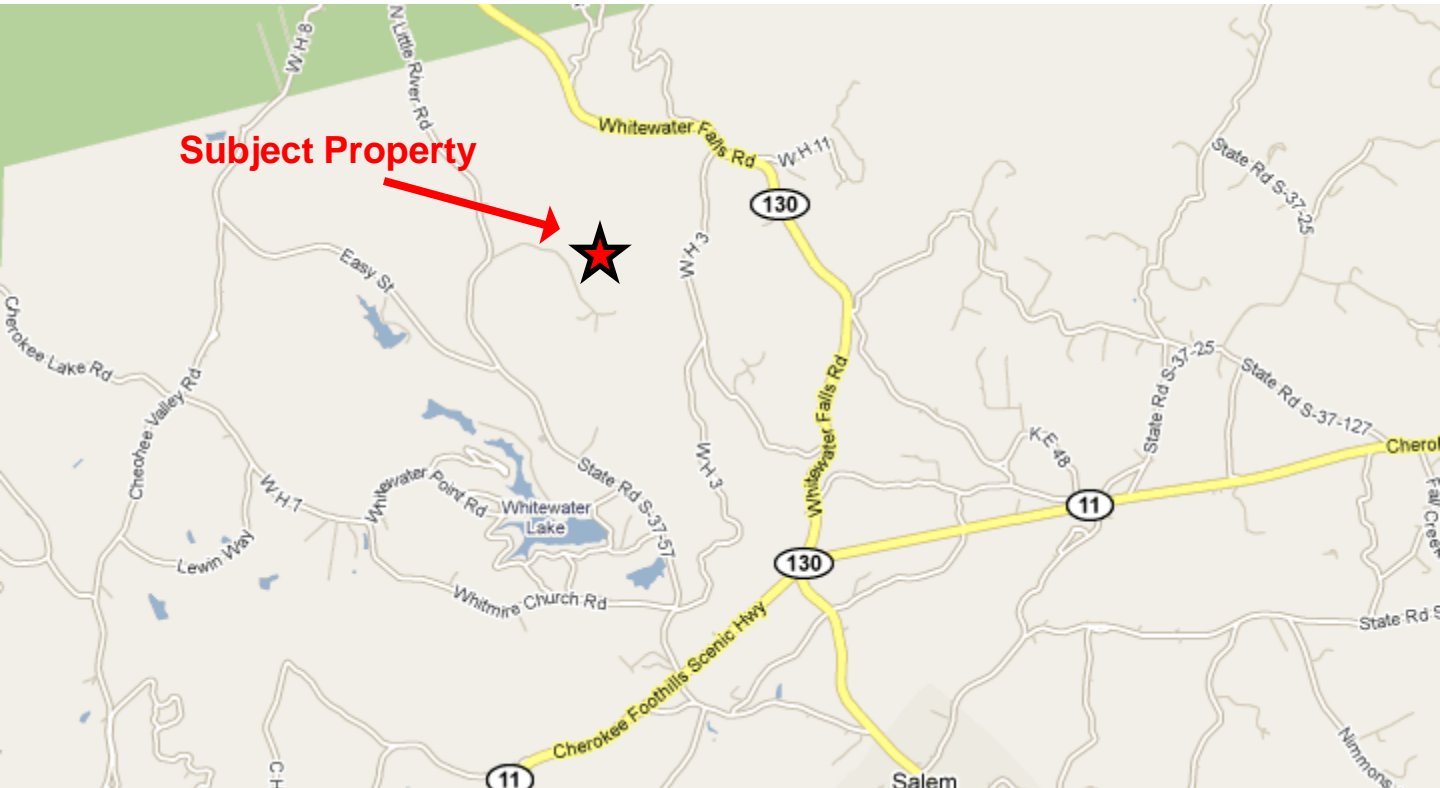
Offered by Jon Tompkins 864-395-0322 or jt@jenksincrealty.com



JenksIncRealty

Gibson Mtn Tract

Tax Map #- 044-00-02-018



**PROPERTY FOUND ON TALLEY RD IN OCONEE, SC.
TURN RIGHT ON N. LITTLE RIVER RD FROM HWY 11
SOUTH. GO APPROX 5 MILES AND TURN RIGHT ON
TALLEY RD. PROPERTY IS ON LEFT WITH SIGNAGE.**

Offered by Jon Tompkins 864-395-0322 or jt@jenksincrealty.com