



# Ground Springs Tract

## 0652-01-01-02-103

**JenksIncRealty**

**Tract Size:** 45.6 +/- acres

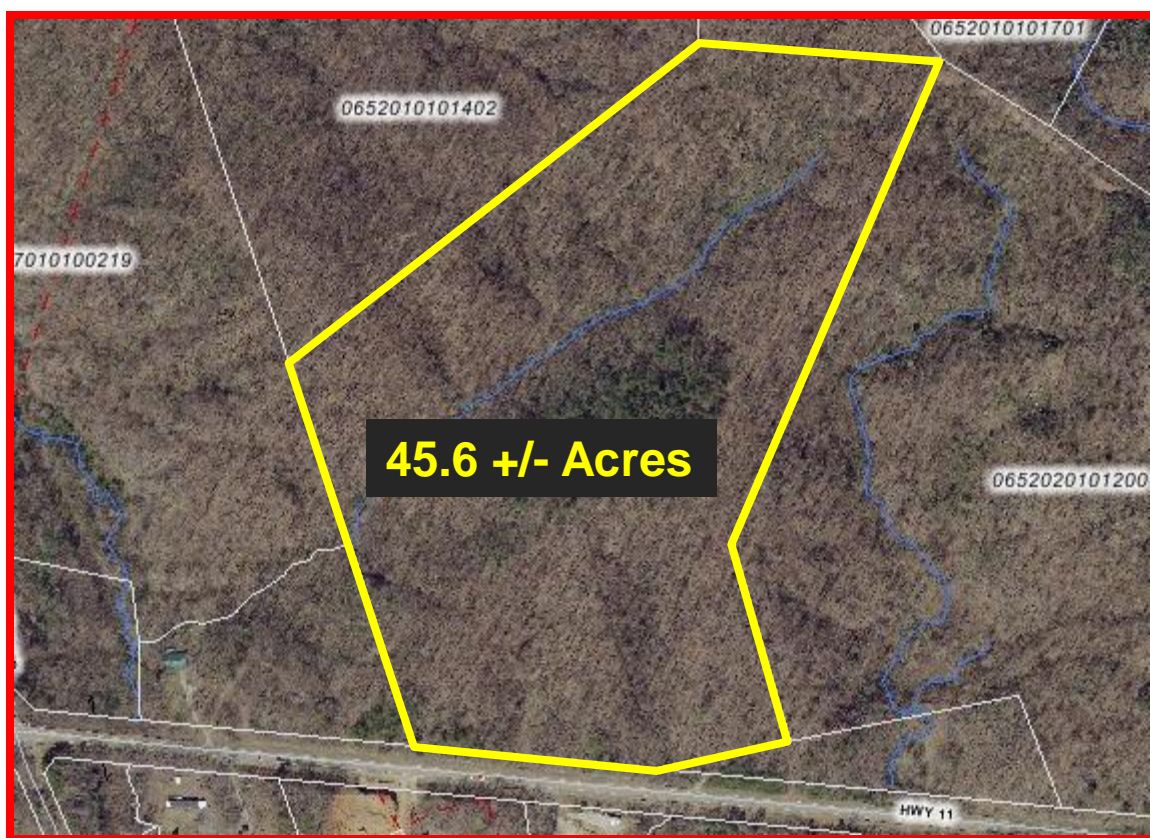
**Price:** \$ 205,000

**Zoning:** None

**Utilities:** Power

**Location:** Hwy 11 in Greenville County

Great home site location with investment potential. Located on Hwy 11 (north of Hwy 25) in the Blue Ridge Mountains, this property boasts views, good climate and seclusion. Located at 1380 ft. above sea-level, the tract offers true mountain living at its' best! This property has the potential to be a family get-away for generations to enjoy. The property also has an investment potential with the probability of future sales. Only being 30 minutes from Downtown Greenville this property is a must see!



Offered by Jon Tompkins 864-395-0322 or [jt@jenksincrealty.com](mailto:jt@jenksincrealty.com)



**JenksIncRealty**

# Ground Springs Tract

0652-01-01-02-103



Beautiful hardwoods throughout.



One of a handful of  
natural springs on the  
property.



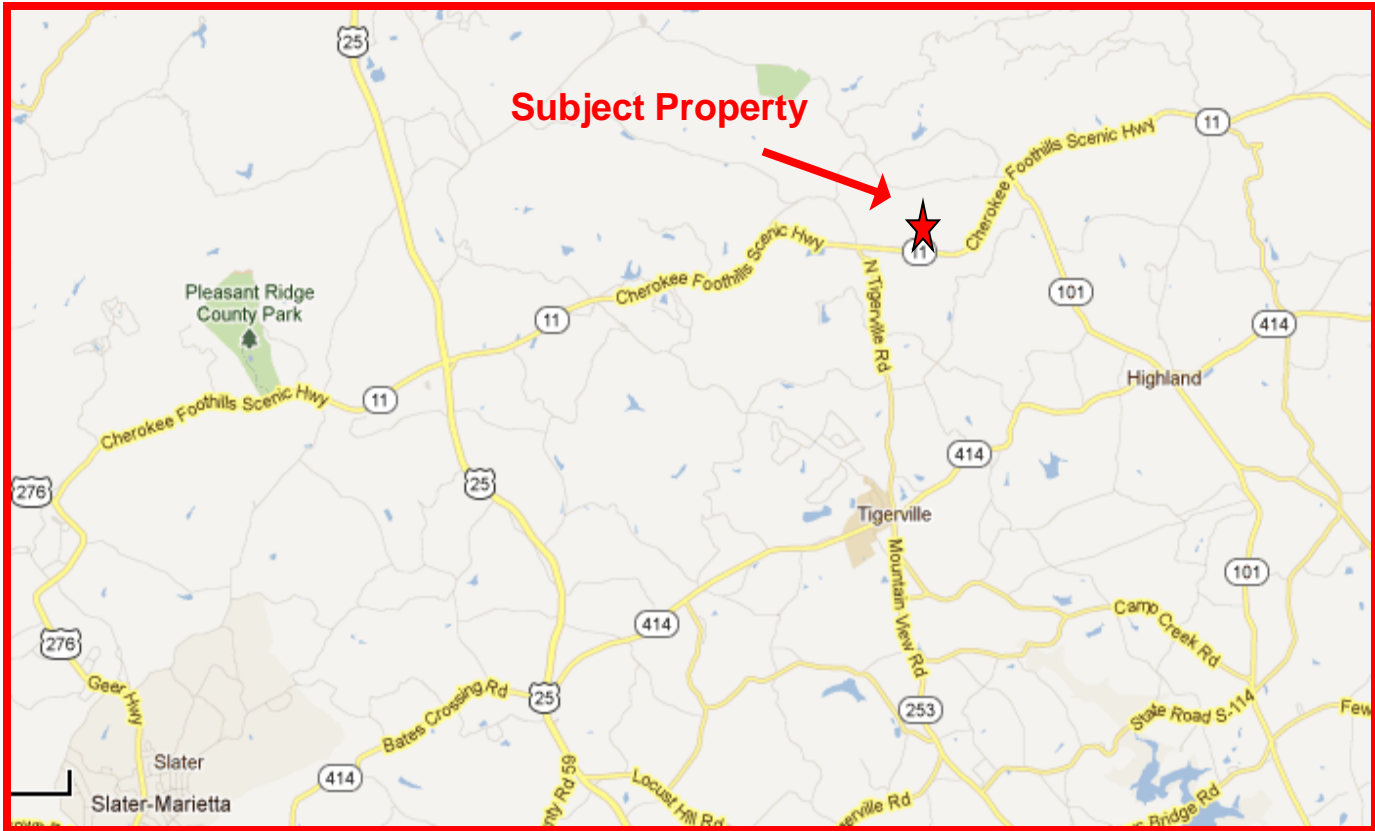
Fantastic views all over!

Offered by Jon Tompkins 864-395-0322 or [jt@jenksincrealty.com](mailto:jt@jenksincrealty.com)



**JenksIncRealty**

# Ground Springs Tract 0652-01-01-02-103



## **Directions From Greenville SC:**

Take Hwy 25 North to Hwy 11 North. Go approximately 5 miles and the property is on your left just past the junction of Hwy 11 and N. Tigerville Rd

Offered by Jon Tompkins 864-395-0322 or [jt@jenksincrealty.com](mailto:jt@jenksincrealty.com)