



# Hard Labor Creek Tree Farm

CK2421

**JenksIncRealty**

**Tract Size:** 190.8 acres

**Price:** \$398,000 (\$2,086/ac.)

**Zoning:** RDD

**Utilities:** Power, water, phone

**TID:** 6823-830-665

**Location:** Promise Land, Greenwood Cty

Good timber investment tract. Two young pine stands, with 89 acres of 2001 Loblolly that will be ready for its first thinning in just a couple of years, and 66 acres of 2006 Loblolly that will provide more income right behind it. Mature hardwoods along Hard Labor Creek that flows through the back of the property. Good access from paved road frontage on Whitehall Road. Only 10 minutes to downtown Greenwood. Also available as two subdivide parcels: Tract A is 39.8 Ac. for \$2,034/ac. and Tract B is 151 Ac. for \$2,100/ac.



Hard Labor Creek flowing across the property

Offered by John Stillwell 864-414-1879 or [john@jenksincrealty.com](mailto:john@jenksincrealty.com)



# Hard Labor Creek Tree Farm

CK2421

**JenksIncRealty**



Small food plot between the two pine plantations



Open hardwood bottom along Hard Labor Creek



Paved Whitehall Road frontage



Entrance to the property

**Call John Stillwell 864-414-1879 or [john@jenksincrealty.com](mailto:john@jenksincrealty.com)**



# Hard Labor Creek Tree Farm

CK2421

**JenksIncRealty**



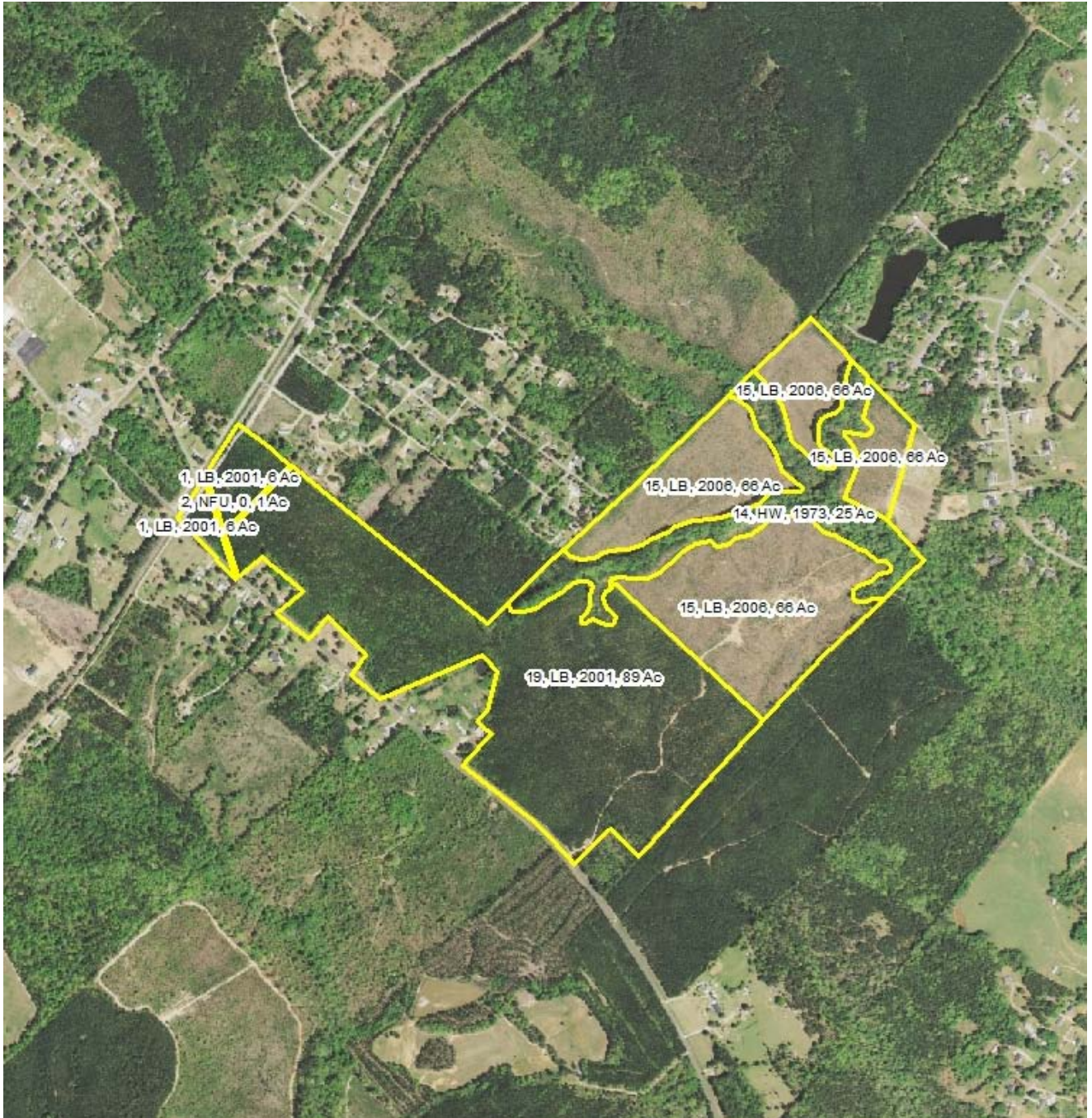
Call John Stillwell 864-414-1879 or [john@jenksincrealty.com](mailto:john@jenksincrealty.com)



# Hard Labor Creek Tree Farm

CK2421

**JenksIncRealty**



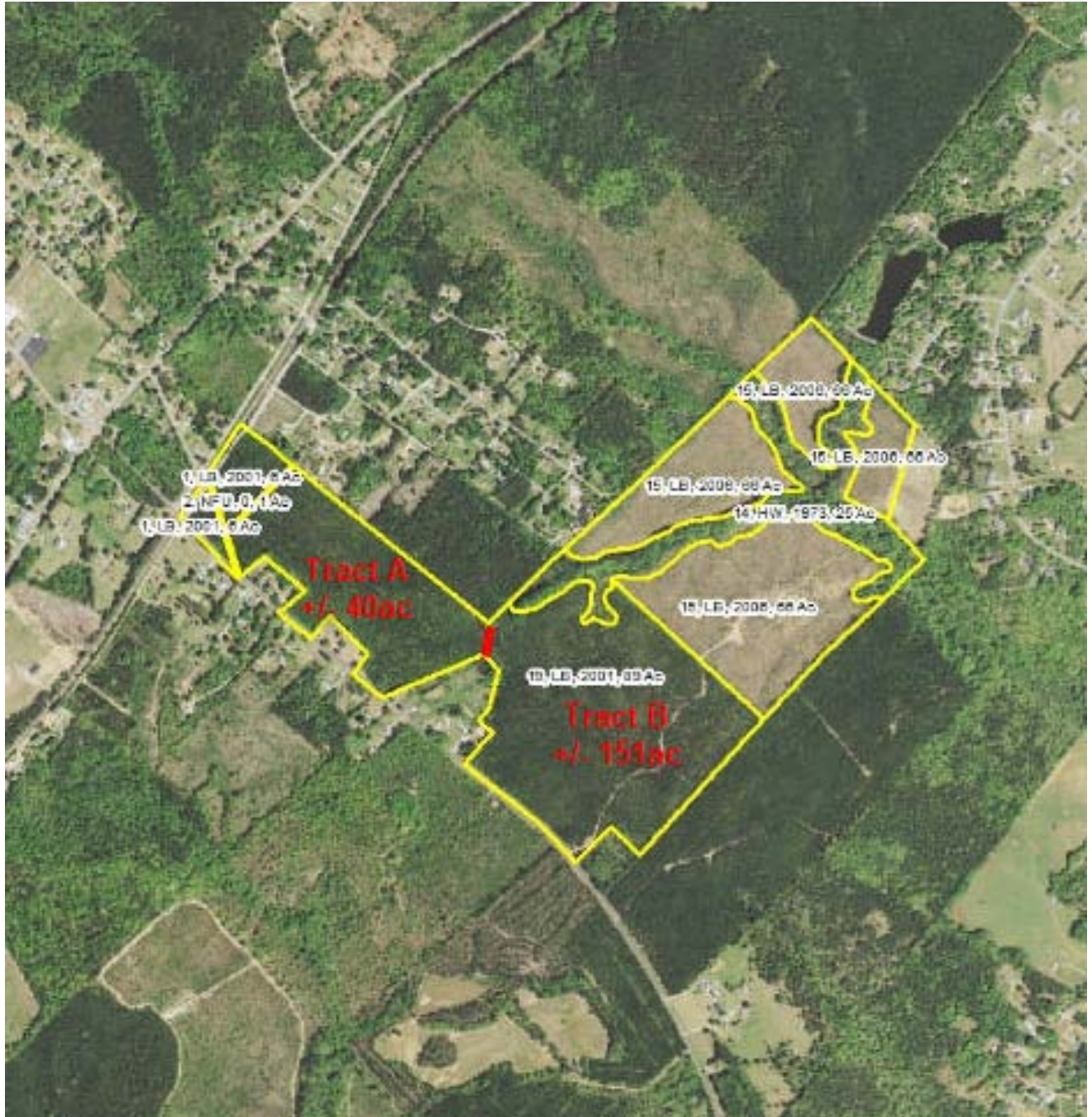
Call John Stillwell 864-414-1879 or [john@jenksincrealty.com](mailto:john@jenksincrealty.com)



# Hard Labor Creek Tree Farm

CK2421

JenksIncRealty



Call John Stillwell 864-414-1879 or [john@jenksincrealty.com](mailto:john@jenksincrealty.com)