

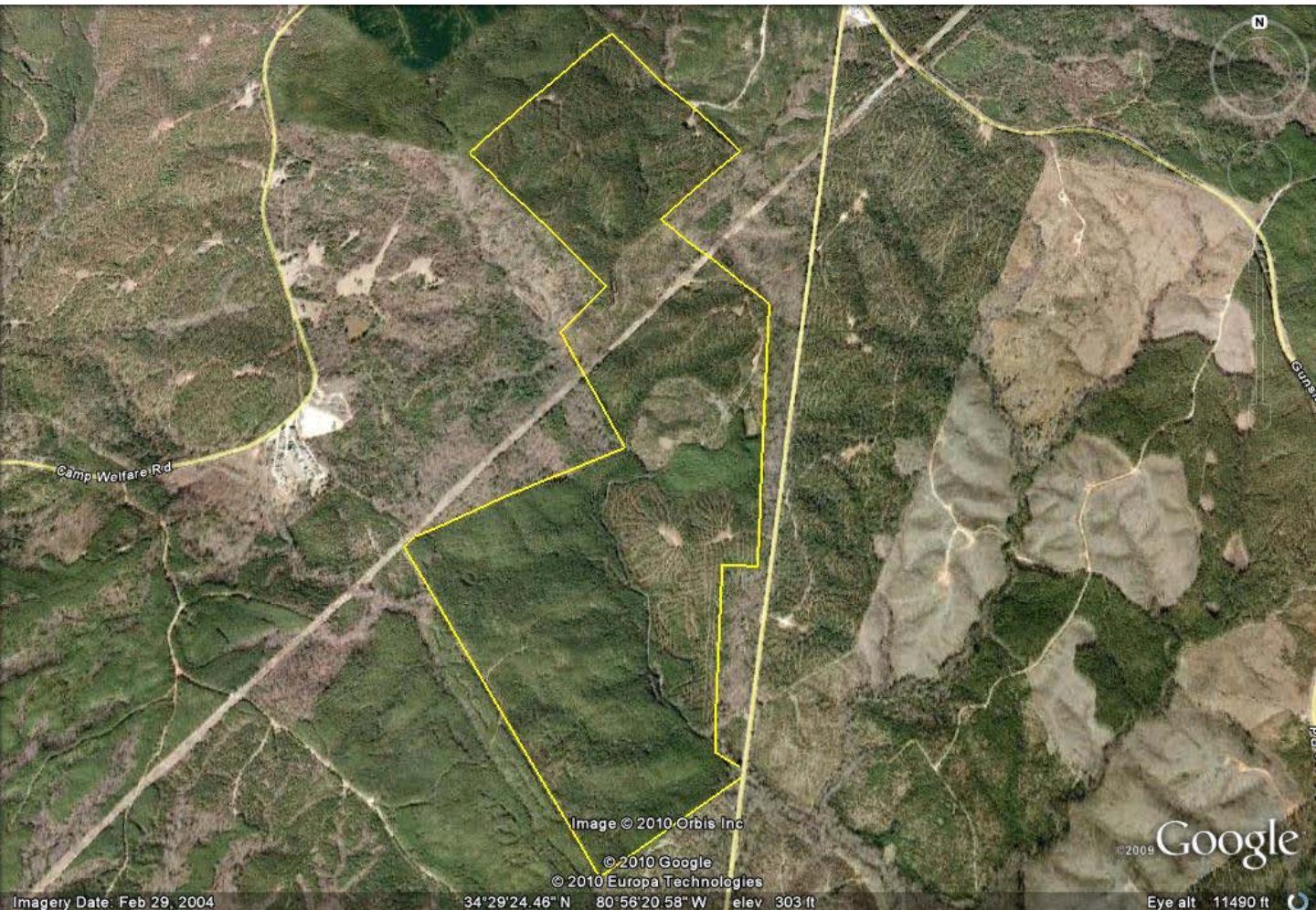


Highway 21 Tract

JenksIncRealty

Tract Size: 392 acres **Price:** \$1,057,000
Zoning: None **Location:** Fairfield County, SC

A great recreation and timber investment tract! The planted pines consist of 184 acres of thinned 23 year-old timber, 138 acres of thinned 26 year-old timber, and 38 acres of un-thinned 12 year-old timber. There are also 28 acres of mature hardwoods. The tract has access off of Highway 21 and is located 35 miles from Columbia, SC.



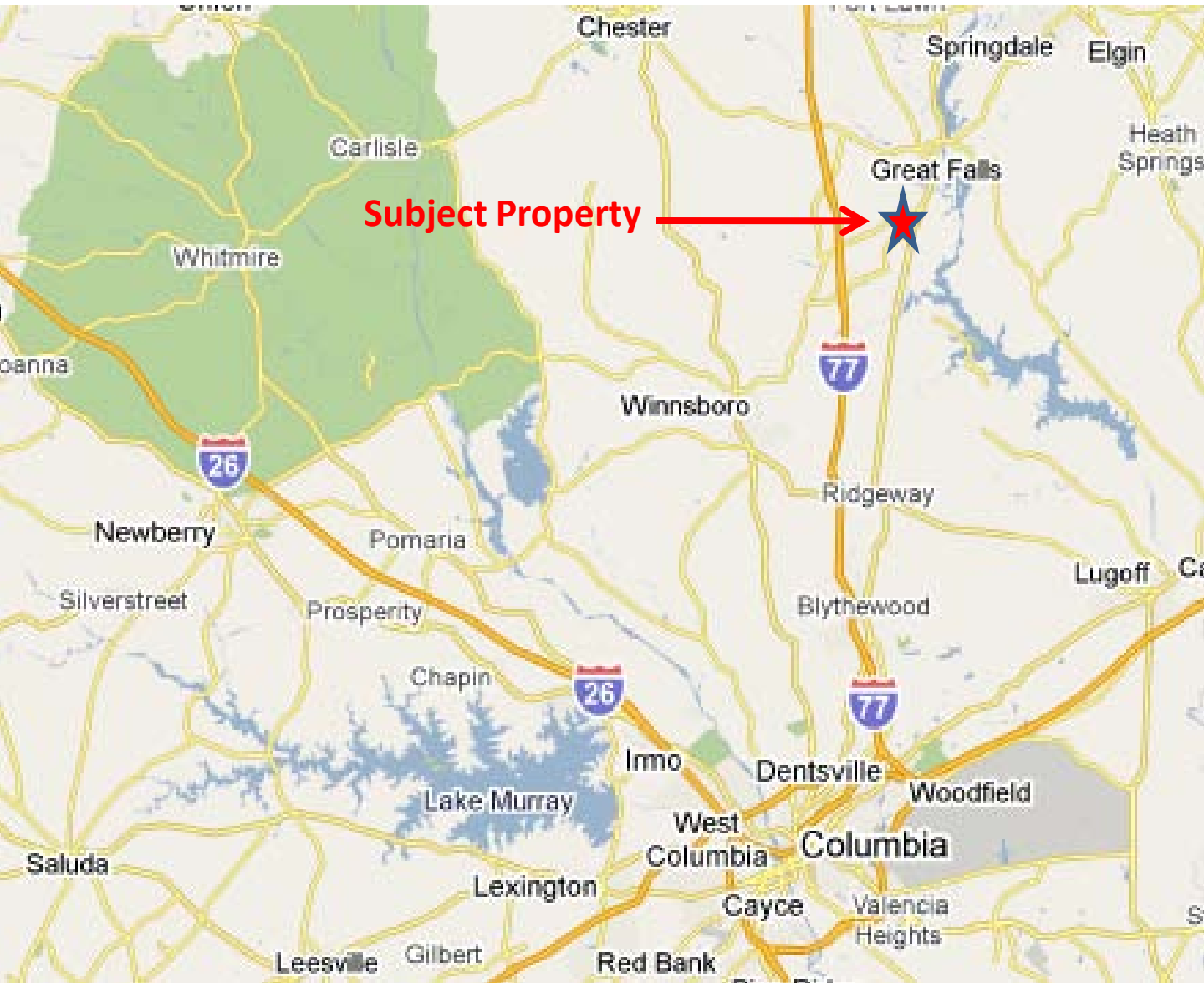
Call Charlie Reynolds (864)-238-7471

Call Rusty Hamrick (864)-230-0694



Highway 21 Tract

JenksIncRealty



Subject Property →



Call Charlie Reynolds (864)-238-7471

Call Rusty Hamrick (864)-230-0694