



JenksIncRealty

Highway 14 Acreage

Tract Size: 51.78+/- Acres

Price: \$499,000

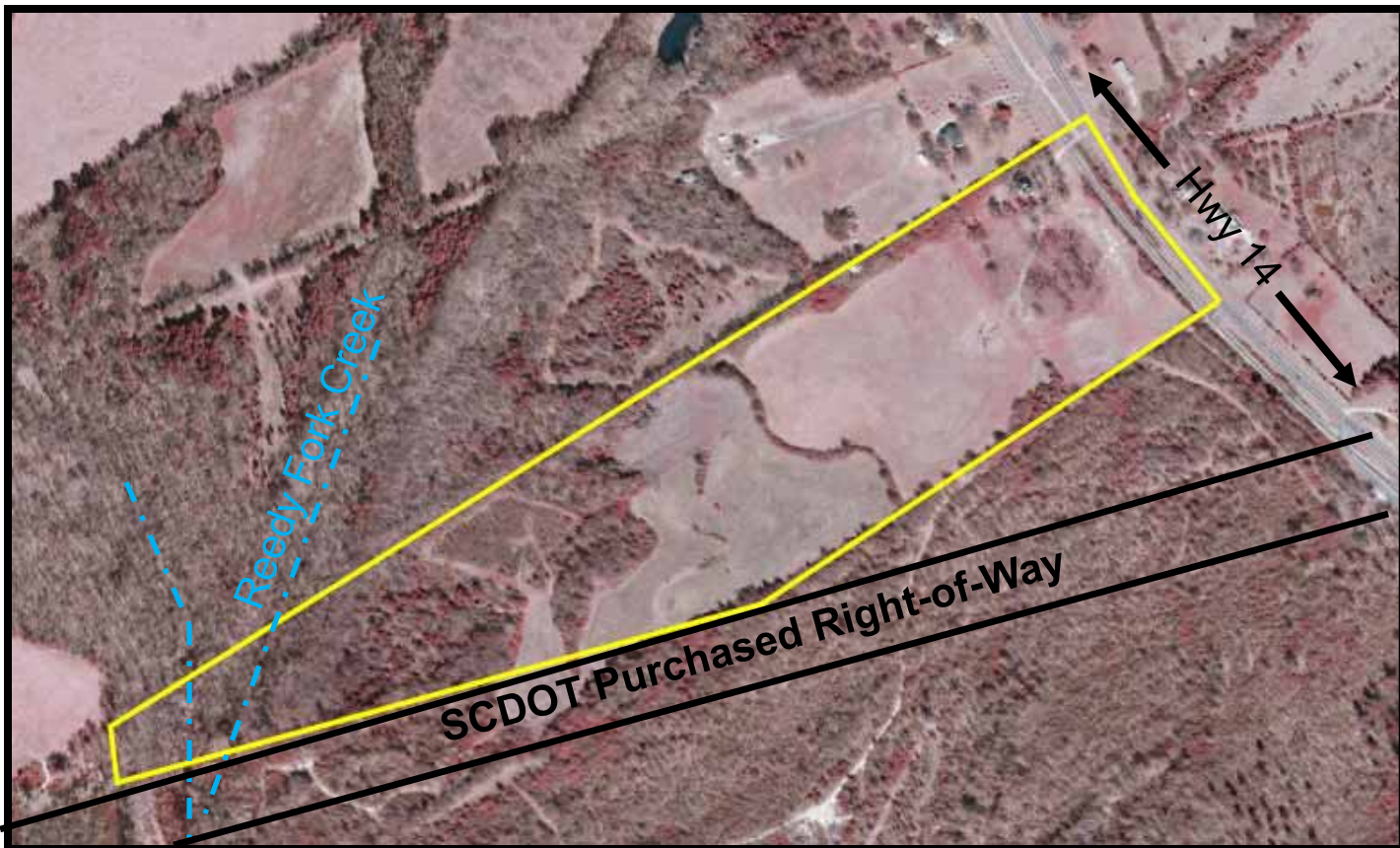
TID #: 293-00-00-020

County: Laurens

Utilities: Power, phone, gas, well & septic

Zoning: None

Multi-use acreage just north of Laurens, SC on SC Highway 14. Mostly established pasture, with Reedy Fork Creek crossing the back of the property. Excellent flat to slightly rolling topography. It would be an ideal horse property. The five-bedroom farmhouse will be sold “as-is”, but is in good condition and has been maintained. Very good long-term commercial potential with proximity to Laurens, frontage on Highway 14, railroad and location along the SCDOT-owned right-of-way around Laurens. Seller will subdivide house and smaller acreage with acceptable offer.



Offered by John Stillwell • (864) 414-1879 • www.jenksincrealty.com



JenksIncRealty

Highway 14 Acreage



Five Bedroom House In Good Condition



Open Pasture – Ready for Horses!

Offered by John Stillwell • (864) 414-1879 • www.jenksincrealty.com



JenksIncRealty

Highway 14 Acreage



Reedy Fork Creek



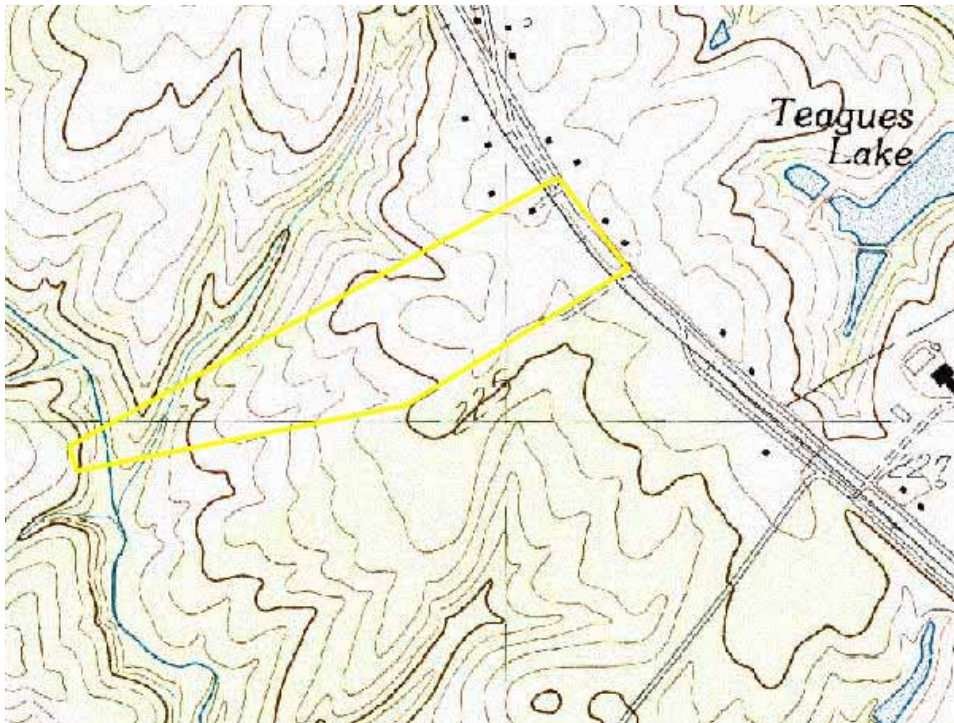
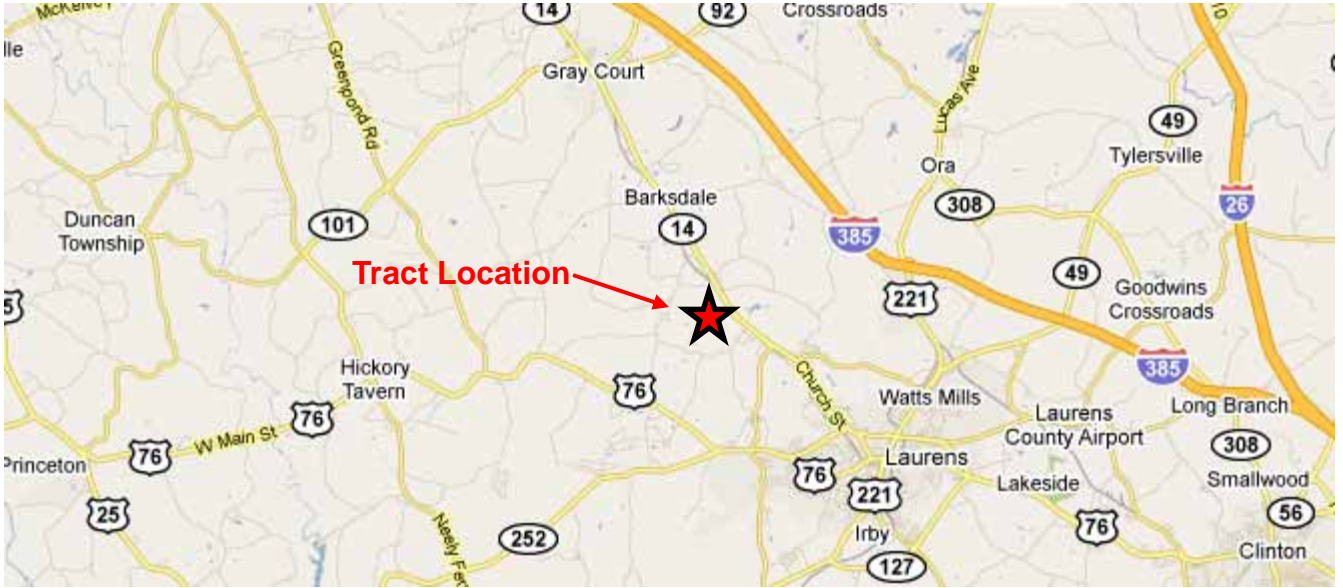
Pecan Grove and Front Pasture

Offered by John Stillwell • (864) 414-1879 • www.jenksincrealty.com



JenksIncRealty

Highway 14 Acreage



Topo Map

Offered by John Stillwell • (864) 414-1879 • www.jenksincrealty.com