



# Mulberry Creek Tract

## CK2420

**JenksIncRealty**

**Tract Size:** 68 acres      **Price:** \$172,000 (\$2,525/Ac.)  
**Zoning:** None      **Utilities:** Power, phone, water  
**Location:** Miller Rd., Greenwood County

A nice timber tract that would make a great recreational or rural estate property. 57 acres of 2000 Loblolly that will produce income from it's first thinning in just a couple of years. Paved road frontage and a well-maintained internal road system. Excellent deer and turkey hunting, and even wood ducks along Mulberry Creek! Most of the eastern property line is a small creek with nice hardwoods that empties into Mulberry Creek along the southern end of the property. The location is only 1 mile from Lake Greenwood, and just 40 minutes from Greenville.



Offered by John Stillwell 864-414-1879 or [john@jenksincrealty.com](mailto:john@jenksincrealty.com)



# Mulberry Creek Tract

CK2420

**JenksIncRealty**



Hardwoods along eastern property line



Wildlife food plot along internal road



Fast-growing Loblolly Pines!



Mulberry Creek

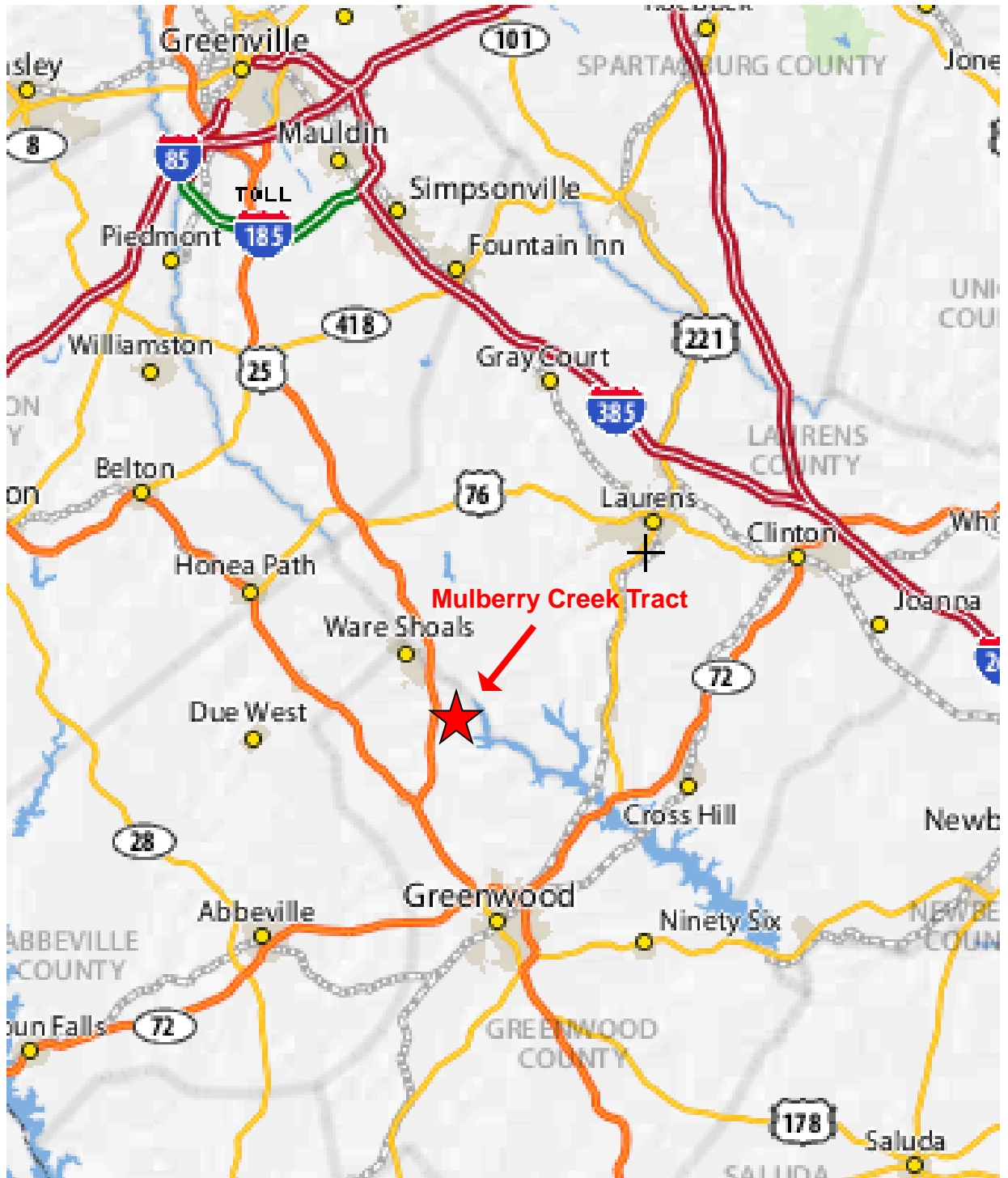
**Call John Stillwell 864-414-1879 or [john@jenksincrealty.com](mailto:john@jenksincrealty.com)**



# Mulberry Creek Tract

CK2420

**JenksIncRealty**



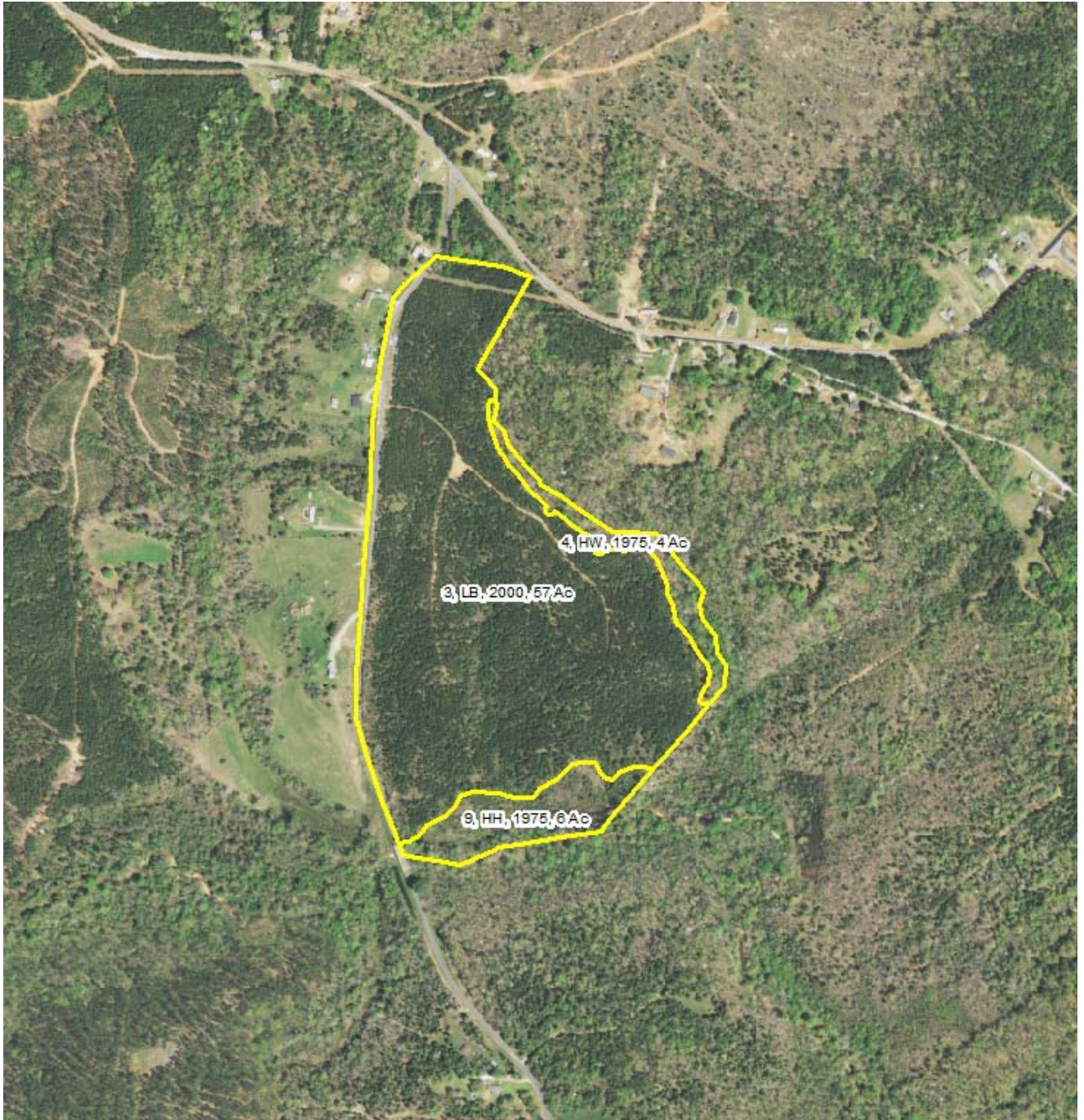
Call John Stillwell 864-414-1879 or [john@jenksincrealty.com](mailto:john@jenksincrealty.com)



# Mulberry Creek Tract

CK2420

**JenksIncRealty**



Call John Stillwell 864-414-1879 or [john@jenksincrealty.com](mailto:john@jenksincrealty.com)