



**JenksIncRealty**

# PRICE REDUCTION!

## Paris Mountain Laurel Ridge Tract

**Tract Size:** 5 +/- Acres  
**Price:** ~~Was \$75,000~~ Now \$50,000!  
**Zoning:** R-S  
**TID #:** 0463000102114  
**Location:** Laurel Ridge, off of Phillips Trail on Paris Mtn.  
**Utilities:** Power, phone, cable available

Picturesque home site located in the Laurel Ridge subdivision on Paris Mountain. Panoramic western views! Only minutes to downtown Greenville, Furman, the Cherrydale shopping district, Summerset Golf Course and Paris Mountain State Park. Paved access all the way into the property in a covenant protected neighborhood. Mountain living with the convenience and amenities of Greenville!



**Call John Stillwell 864-414-1879**

**[www.jenksinrealty.com](http://www.jenksinrealty.com)**



**JenksIncRealty**

# Paris Mountain Laurel Ridge Tract



**Shared drive into property**



**Roadbed suitable for  
access to housesite**



**Northern View of the top of Paris Mountain**

**Call John Stillwell 864-414-1879**  
**[www.jenksincrealty.com](http://www.jenksincrealty.com)**



# Paris Mountain Laurel Ridge Tract

**JenksIncRealty**

Property located on Laurel Ridge, just off Phillips Trail  
and N. Parker Road at Paris Mountain



Call John Stillwell 864-414-1879  
[www.jenksincrealty.com](http://www.jenksincrealty.com)



# Paris Mountain Laurel Ridge Tract

**JenksIncRealty**

Property located on Laurel Ridge, just off Phillips Trail  
and N. Parker Road at Paris Mountain



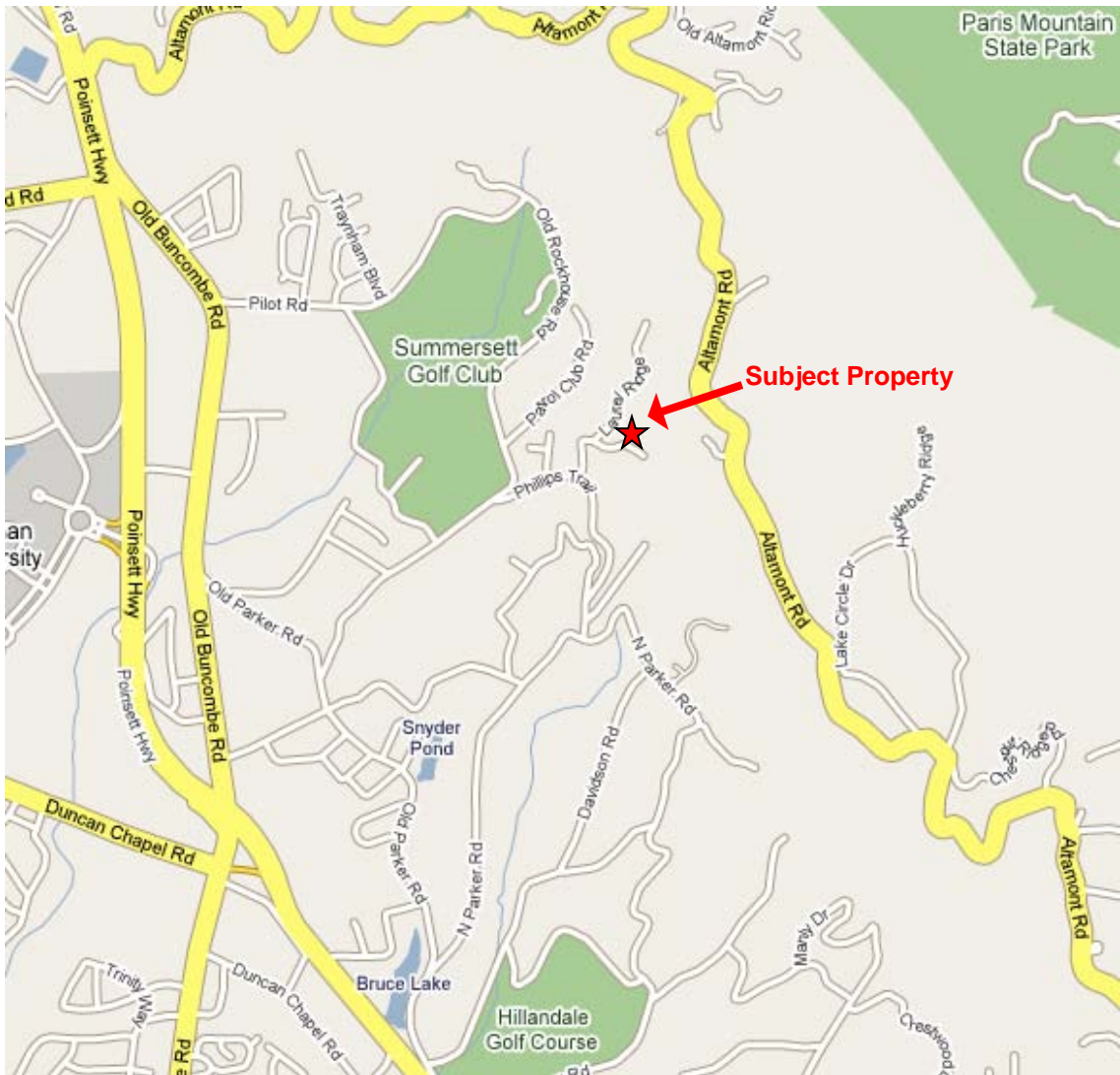
Call John Stillwell 864-414-1879  
[www.jenksincrealty.com](http://www.jenksincrealty.com)



# Paris Mountain Laurel Ridge Tract

**JenksIncRealty**

Property located on Laurel Ridge, just off Phillips Trail and N. Parker Road at Paris Mountain



**Call John Stillwell 864-414-1879**  
**[www.jenksincrealty.com](http://www.jenksincrealty.com)**