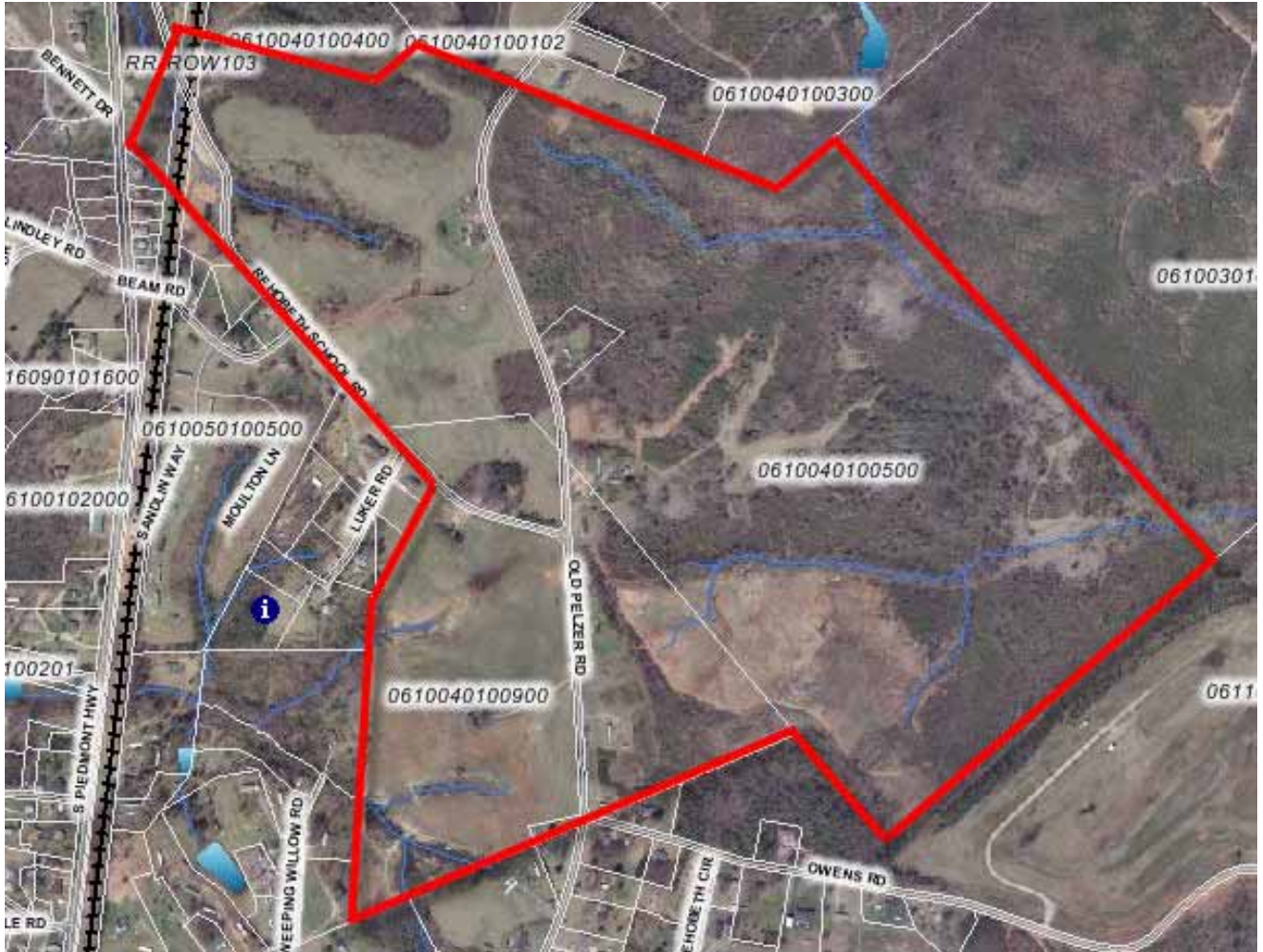




JenksIncRealty

# Piedmont Acreage



**Tract Size:** 250 +/- Acres

**Price:** \$14,000 / acre

**Zoning:** None

**Utilities:** Public water & sewer, power, phone

**TID #:** 0610040100500, -600, -900

**Location:** Piedmont, SC

Acreage located near Piedmont in southern Greenville. Acreage is roughly equal between open pasture and woodlands. Currently in agricultural use, this would be an ideal candidate for development with public water and sewer, as well as railroad frontage. The property has a pond, streams, and significant road frontage on Old Pelzer Road and Rehoboth School Road. Convenient to the Southern Connector, I-85, Greenville and Anderson. Seller will consider offers to subdivide with some restrictions.

**Call John Stillwell 864-414-1879**

**[www.jenksincrealty.com](http://www.jenksincrealty.com)**



# Piedmont Acreage



Old farmhouse in Northern pasture



Property located on Old Pelzer Road,  
1 mi from Piedmont, SC



Rehobeth School Road Frontage



View from Southern property line

Call John Stillwell 864-414-1879  
[www.jenksincrealty.com](http://www.jenksincrealty.com)