



Princeton Deer Hunting Tract

JenksIncRealty

Tract Size: 190 +/- acres **Price:** \$426,600

Zoning: None **Utilities:** Power

Location: Hwy 25 Laurens, County

Excellent timber and recreational tract on Hwy 25 in Laurens County, SC. The property contains a majority of planted, 7 year old pines as well as mature bottomland hardwoods. There is an internal road system providing access to the entire property. Abundant deer, turkey and other wildlife habitat offers game for all types of hunters. Located on Hwy 25 just south of Princeton, SC.



Offered by Jon Tompkins 864-395-0322 or jt@jenksincrealty.com



Princeton Deer Hunting Tract

JenksIncRealty



Example of the
managed Deer
population
on the property.

Stream crossing middle
of property along with
hardwood bottoms.

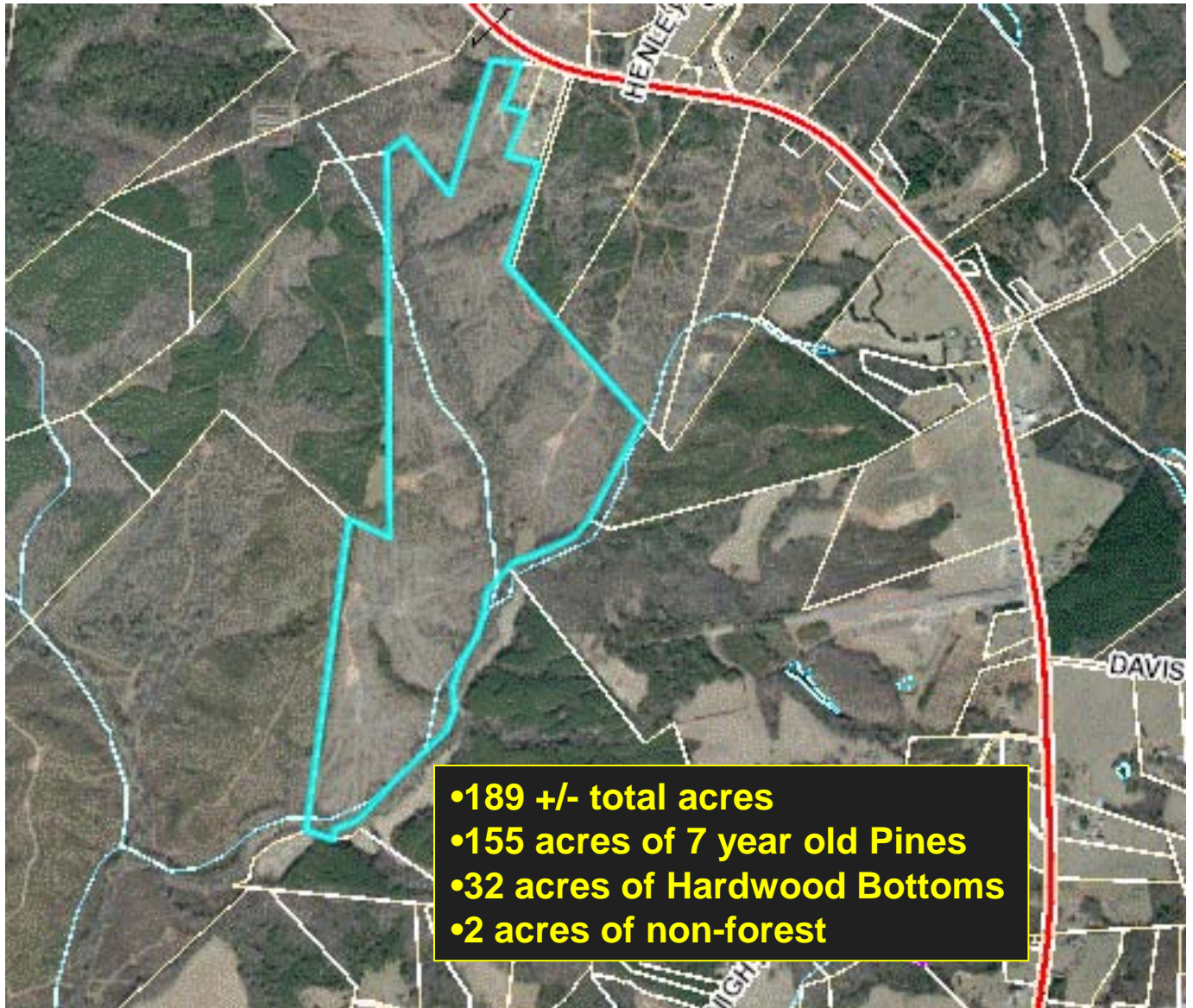


Offered by Jon Tompkins 864-395-0322 or jt@jenksincrealty.com



JenksIncRealty

Princeton Deer Hunting Tract

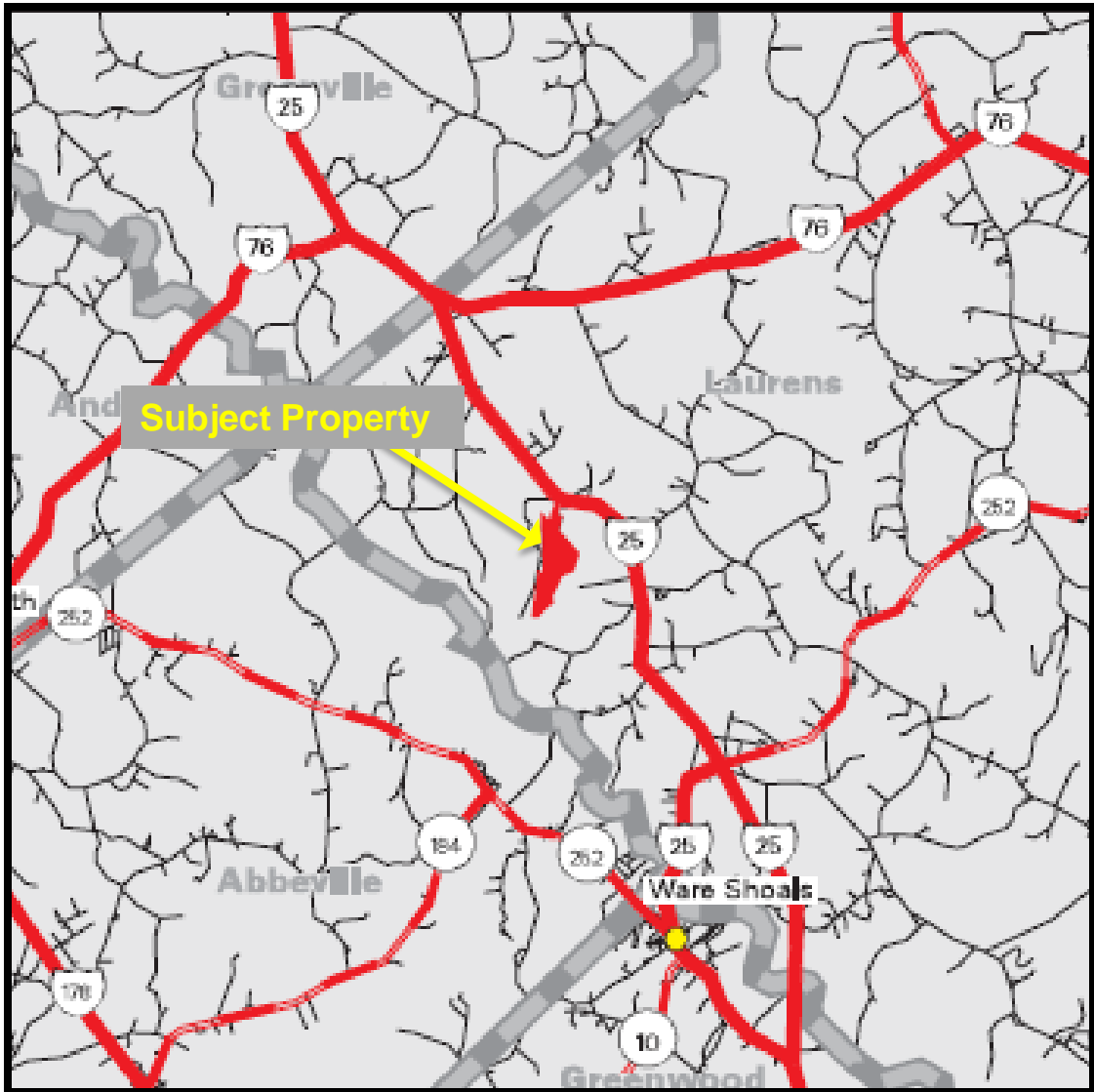


Offered by Jon Tompkins 864-395-0322 or jt@jenksincrealty.com



JenksIncRealty

Princeton Deer Hunting Tract



Driving Directions from Greenville, SC:

Take Hwy 25 South to Princeton, SC. Pass Nuance Dr on the your left, look for 2 house driveway on your right. The gate is to the right after you pull off Hwy 25 onto driveway.

Offered by Jon Tompkins 864-395-0322 or jt@jenksincrealty.com