



# Saluda River Tract C

**JenksIncRealty**

**Tract Size:** 26.16+/- Acres  
**Price:** \$199,500  
**Zoning:** None  
**TID #:** Part of 116-00-00-005  
**Location:** TV Tower Road, Laurens County  
**Utilities:** Power, Water, Phone

Timberland and recreational tract with high bluffs along the Saluda River just north of Lake Greenwood. Property has an improved road system, mature hardwoods, 16 year old pine timber ready for thinning, and an established wildlife food plot. Less than an hour from Greenville and 30 minutes from Greenwood. Part of a 168.36 acre tract available with dockable river frontage.



**Call John Stillwell 864-414-1879**  
**[www.jenksinrealty.com](http://www.jenksinrealty.com)**



**JenksIncRealty**

# Saluda River Tract C



**Beautiful open  
hardwoods**



**Saluda River bluffs**



**Established road system**

**Call John Stillwell 864-414-1879**  
**[www.jenksincrealty.com](http://www.jenksincrealty.com)**



# Saluda River Tract C

**JenksIncRealty**

Property located on the Saluda River, approximately 3mi  
southeast of Ware Shoals

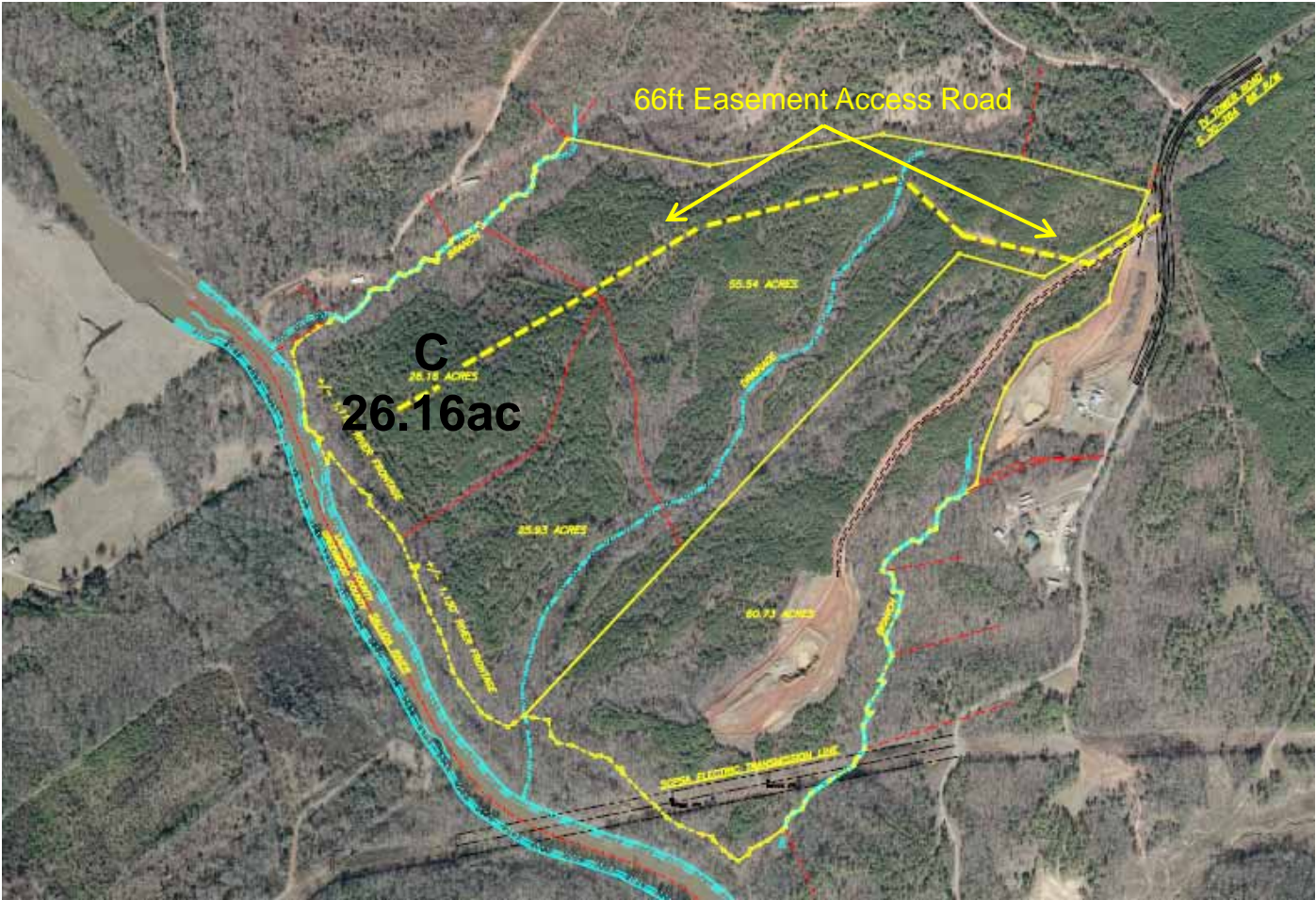


**Call John Stillwell 864-414-1879**  
**[www.jenksincrealty.com](http://www.jenksincrealty.com)**



# Saluda River Tract C

**JenksIncRealty**

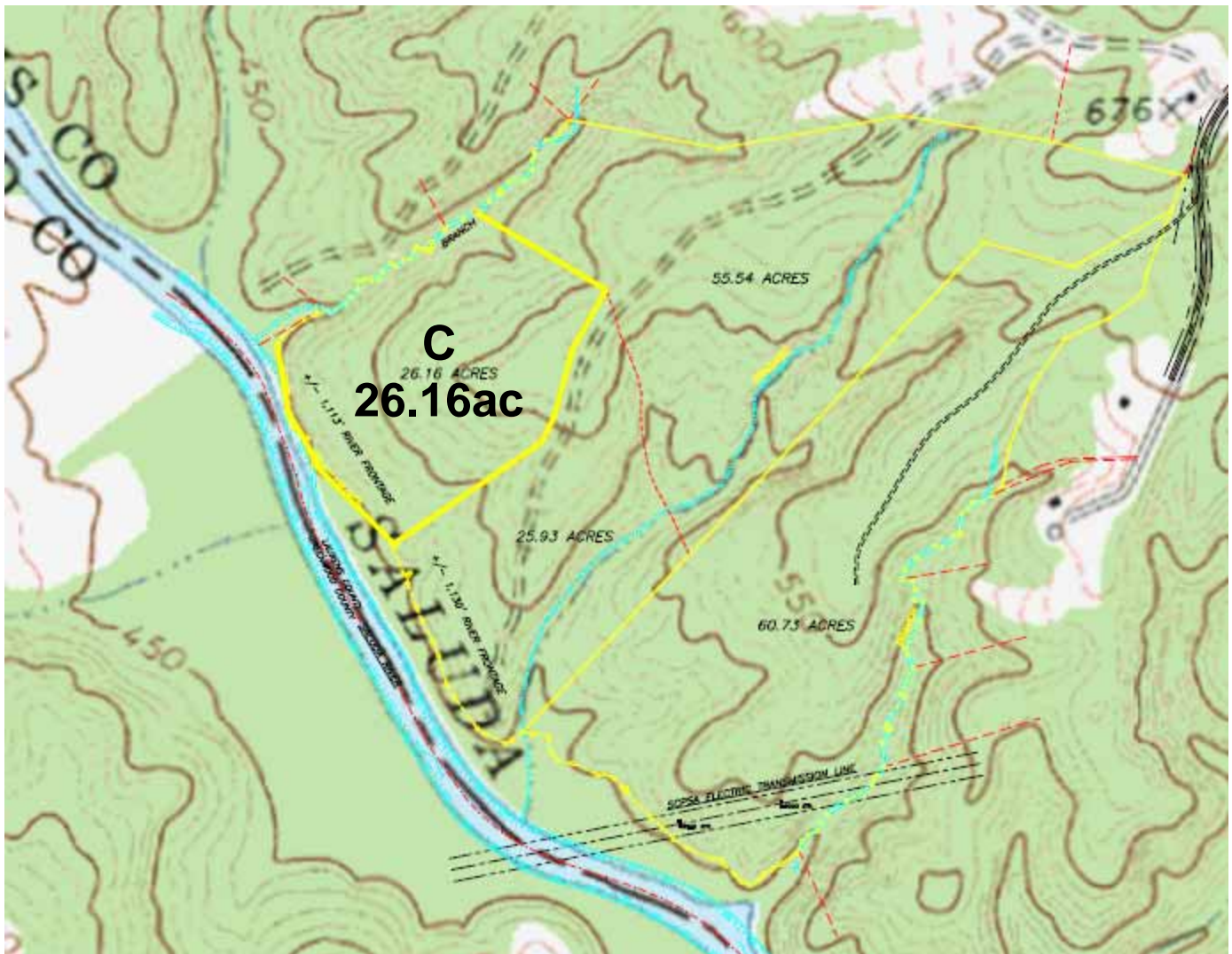


Call John Stillwell 864-414-1879  
[www.jenksincrealty.com](http://www.jenksincrealty.com)



# Saluda River Tract C

**JenksIncRealty**



Call John Stillwell 864-414-1879  
[www.jenksincrealty.com](http://www.jenksincrealty.com)