



South Rabon Creek Tract NB3014

JenksIncRealty

Tract Size: 356 acres

Zoning: None

Location: Crawford Rd. Near Hickory Tavern in Laurens County

Price: \$940,000 (\$2,640/Ac.)

Utilities: Power, phone

Excellent timber investment tract with outstanding recreational value. 308 acres of 1993 Loblolly that has been thinned once and will be ready for a second thinning in just a few years. Paved road frontage on Crawford and Benjamin Roads. There is excellent deer and turkey hunting in this area, and wood ducks are abundant in the natural ponds along the creek that flows through the middle of the property and into South Rabon Creek. The topography and water flow would support a large pond and even a duck impoundment. The location is only 15 minutes from Laurens and just 30 minutes from Greenville. This tract is also available as two subdivide parcels. Tract A is 175.8ac. and \$2,691/ac. and Tract B is 180.1ac. and \$2,591/ac.



Pair of wood ducks feeding in the creek

Offered by John Stillwell 864-414-1879 or john@jenksincrealty.com



South Rabon Creek Tract NB3014

JenksIncRealty



Excellent stand of growing pine
timber



One of several natural beaver ponds
across the property



Paved road frontage



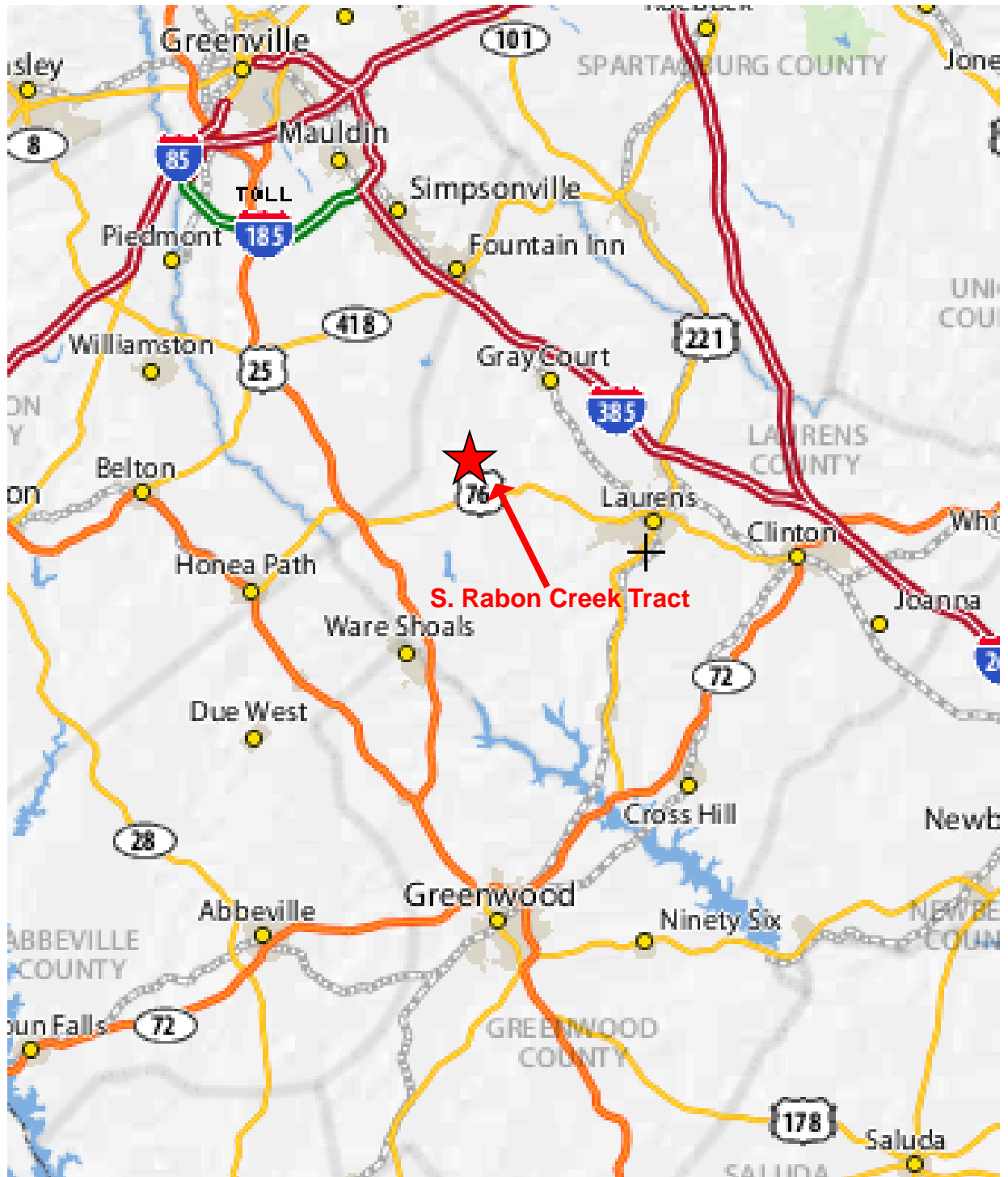
Deer stand overlooking a wildlife food
plot

Call John Stillwell 864-414-1879 or john@jenksincrealty.com



South Rabon Creek Tract NB3014

JenksIncRealty

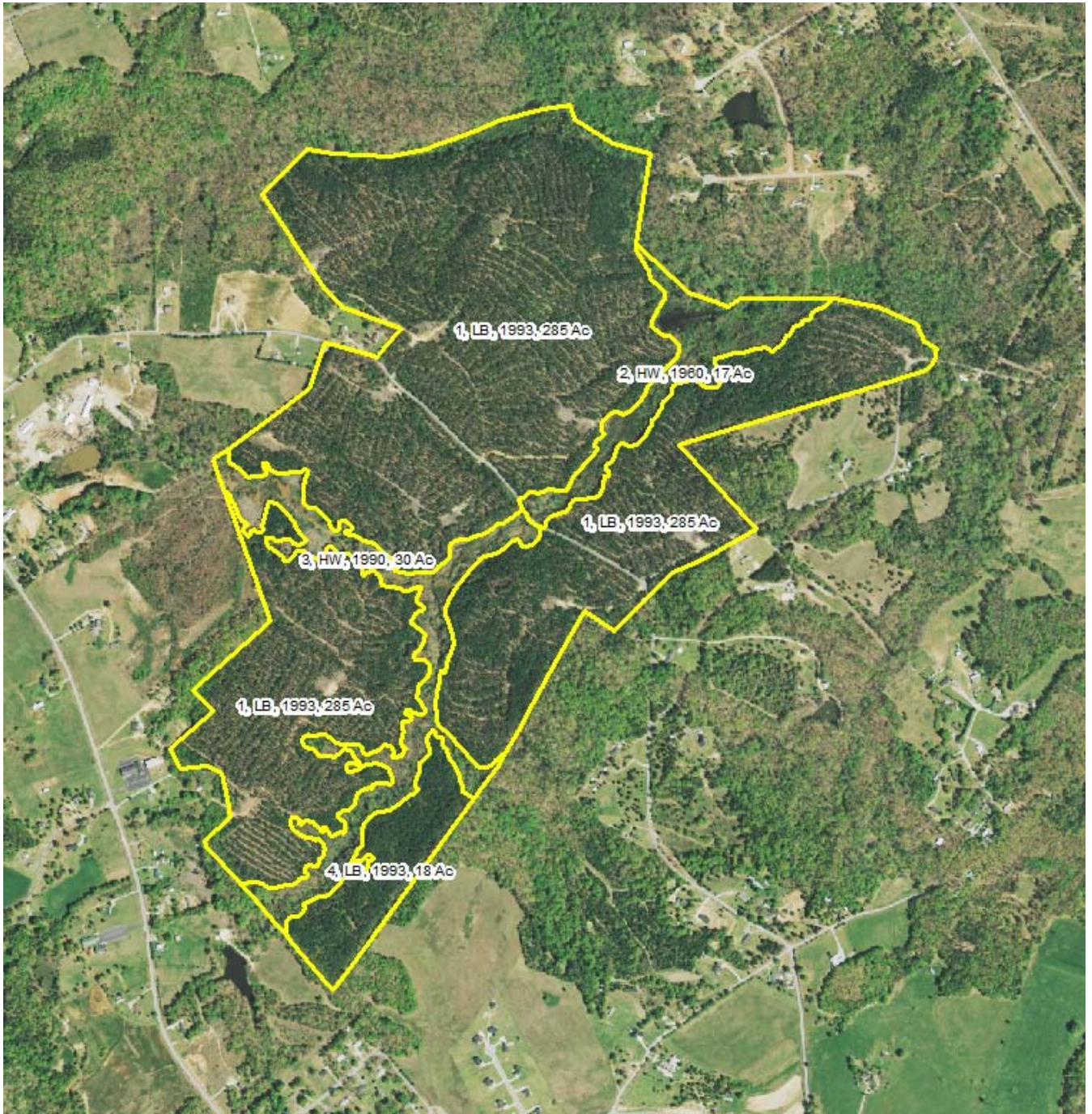


Call John Stillwell 864-414-1879 or john@jenksincrealty.com



South Rabon Creek Tract NB3014

JenksIncRealty

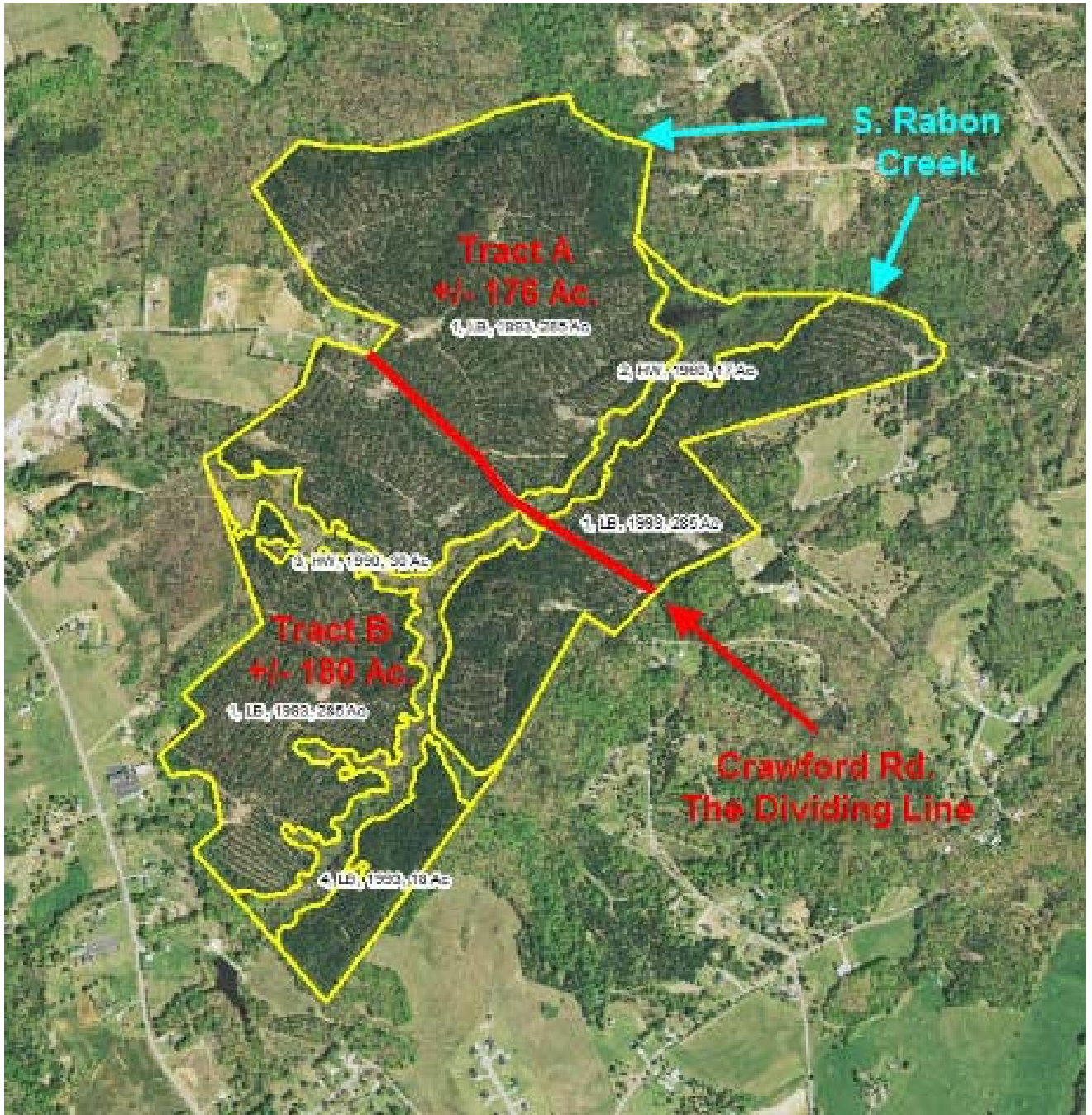


Call John Stillwell 864-414-1879 or john@jenksincrealty.com



South Rabon Creek Tract NB3014

JenksIncRealty



Call John Stillwell 864-414-1879 or john@jenksincrealty.com