



Hwy 72 Tract CK0115

JenksIncRealty

Tract Size: 106 acres

Price: \$ 216,000

Zoning: None

Utilities: Power, Gas, Phone, Water

Location: Hwy 72, Abbeville, County

Excellent timber and recreational tract on Hwy 72 in Abbeville County. The property contains a majority of 1996 planted, once thinned pines as well as mature bottomland hardwoods. There is an internal road system providing access to the entire property and several food plots. Abundant deer, turkey and other wildlife habitat offers game for all type hunters. Located just outside the historic town Abbeville, SC.

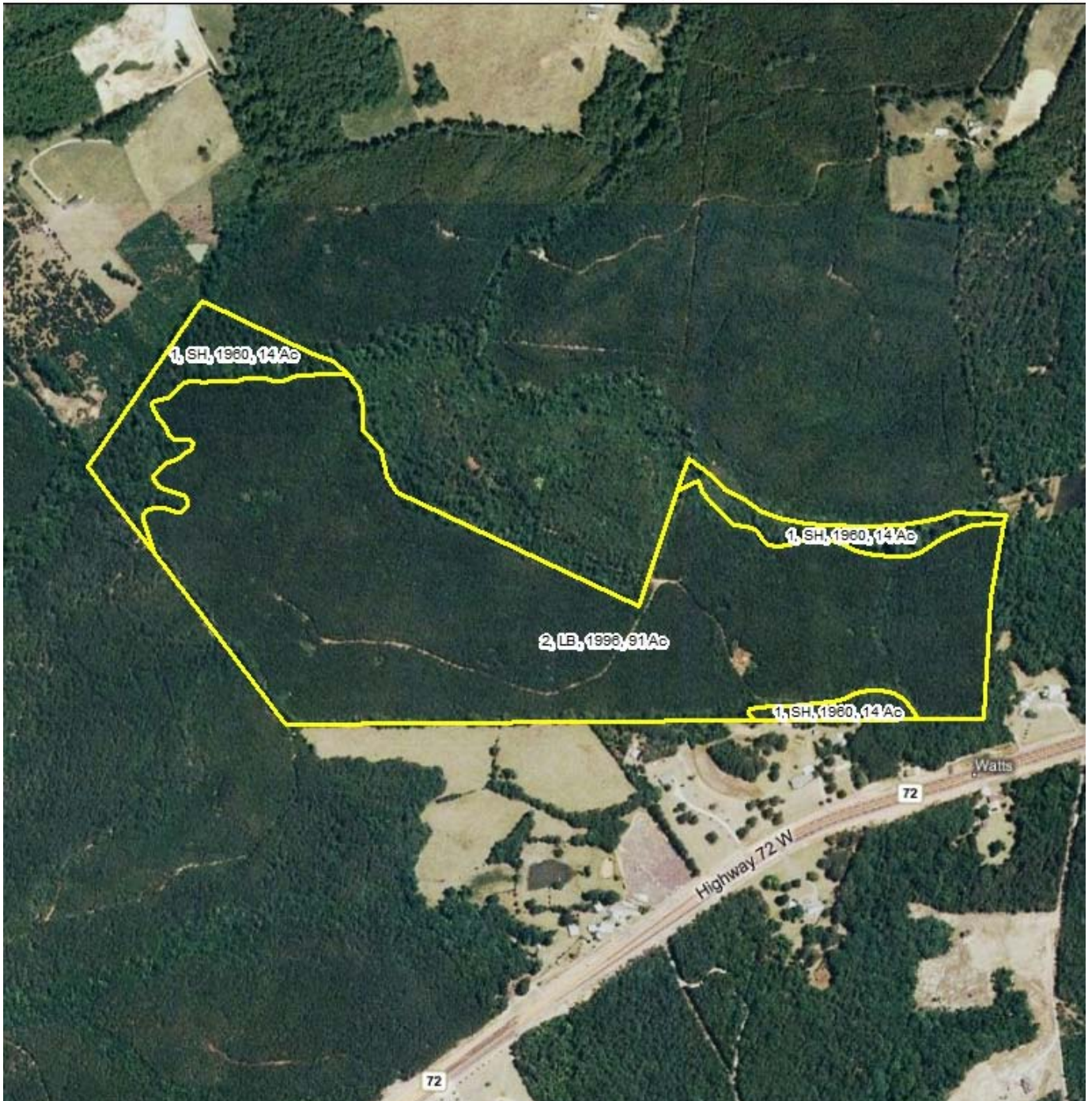


Offered by Jon Tompkins 864-395-0322 or jt@jenksincrealty.com



Hwy 72 Tract CK0115

JenksIncRealty



Offered by Jon Tompkins 864-395-0322 or jt@jenksincrealty.com



Hwy 72 Tract CK0115

JenksIncRealty



From Historic Downtown Abbeville:

Heading west on Hwy 72 out of Abbeville, the tract is located approx. 7 miles on the right. The entry for the property is just past an abandoned house/garage located on the road. The house/garage has a yellow/white door garage door.

Offered by Jon Tompkins 864-395-0322 or jt@jenksincrealty.com