



Picket Post Tract

Tax Map #107-00-03-019

JenksIncRealty

Tract Size: 50.15 acres **Price:** \$476,425

Zoning: None **Utilities:** Power

Location: Chalmers Mtn Road, Oconee County

Excellent recreational tract in Northwest Oconee County. The property contains various hardwoods and a sloping topography. There are two creeks that cross the property with a potential for a pond to be created with ease.. Abundant deer, turkey and other wildlife habitat provide ample game for hunters of all types. Less than 2 miles from Hwy 11 and 10 minutes from Walhalla, SC .

A Mixture of Hardwoods
and Pines

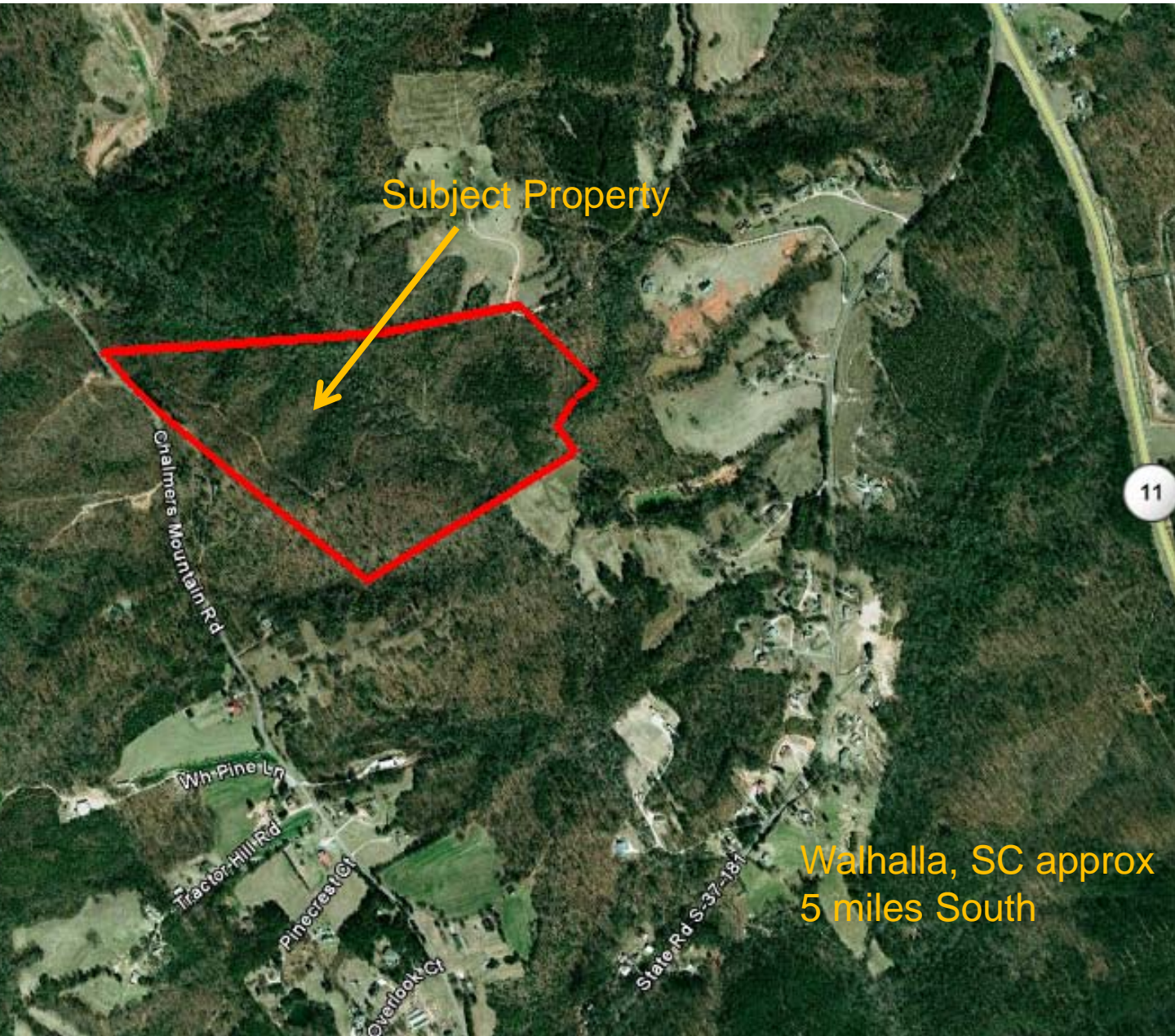


Significant Road Frontage



Picket Post Tract

JenksIncRealty

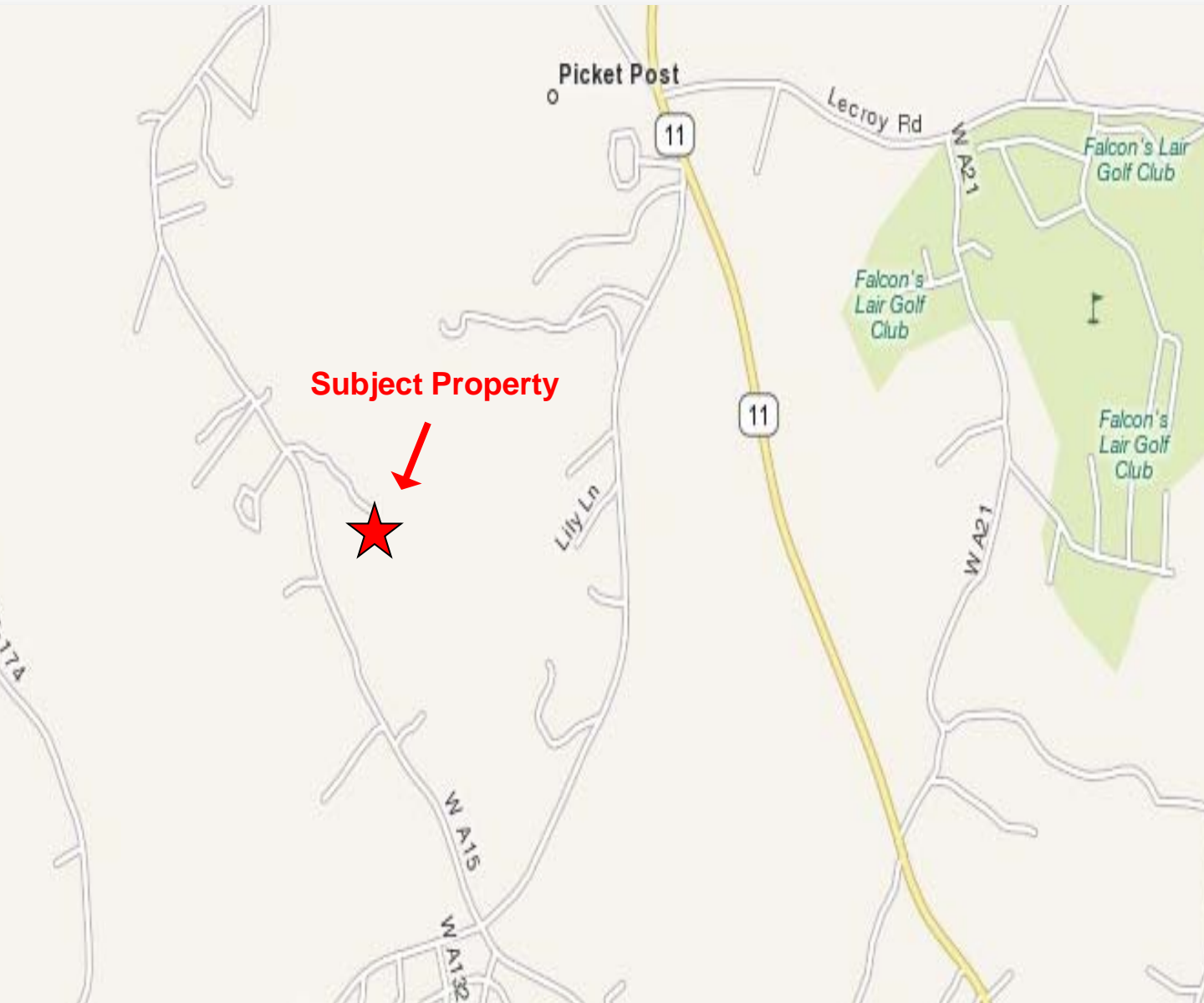


Offered by Jon Tompkins 864-395-0322 or jt@jenksincrealty.com



Picket Post Tract

JenksIncRealty



**PROPERTY LOCATED ON CHALMERS MOUNTAIN ROAD
NEAR HWY 11. ACROSS HWY 11 FROM FALCONS LAIR
GOLF COURSE. 10 MINUTES NORTH OF WALHALLA, SC.**

Offered by Jon Tompkins 864-395-0322 or jt@jenksincrealty.com