



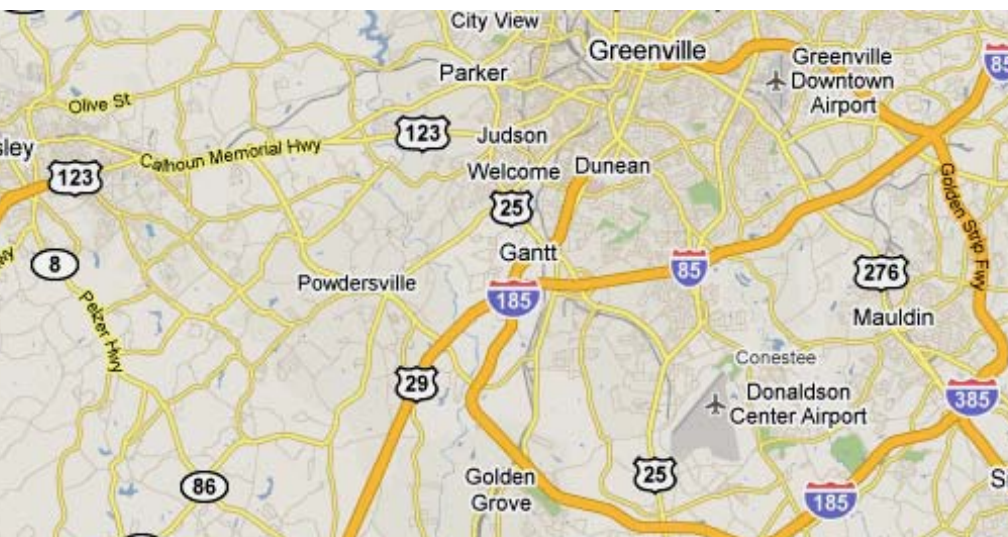
# Reedy River Timber Tract

217± ac. for \$2,375,000

**JenksIncRealty**

**Tract Location:** Woodside Road just south of Highway 418 in Greenville, SC

**Details:** This one of a kind tract runs all the way from Woodside road to the Reedy River. It is a rare opportunity to find large acreage close to Greenville with multiple value sources. It boasts over 4,400 feet of frontage on the Reedy River and a 20 year old pine plantation that has been properly managed. Deer and Turkey are abundant. Property also qualifies for a conservation easement. Don't miss your chance to own a mega tract 10 miles from the city limits of Greenville that has development, recreational, timber and/or conservation value!



Reedy River



Contact Jenks Patrick: 864-506-0416

[www.jenksincrealty.com](http://www.jenksincrealty.com)





**JenksIncRealty**

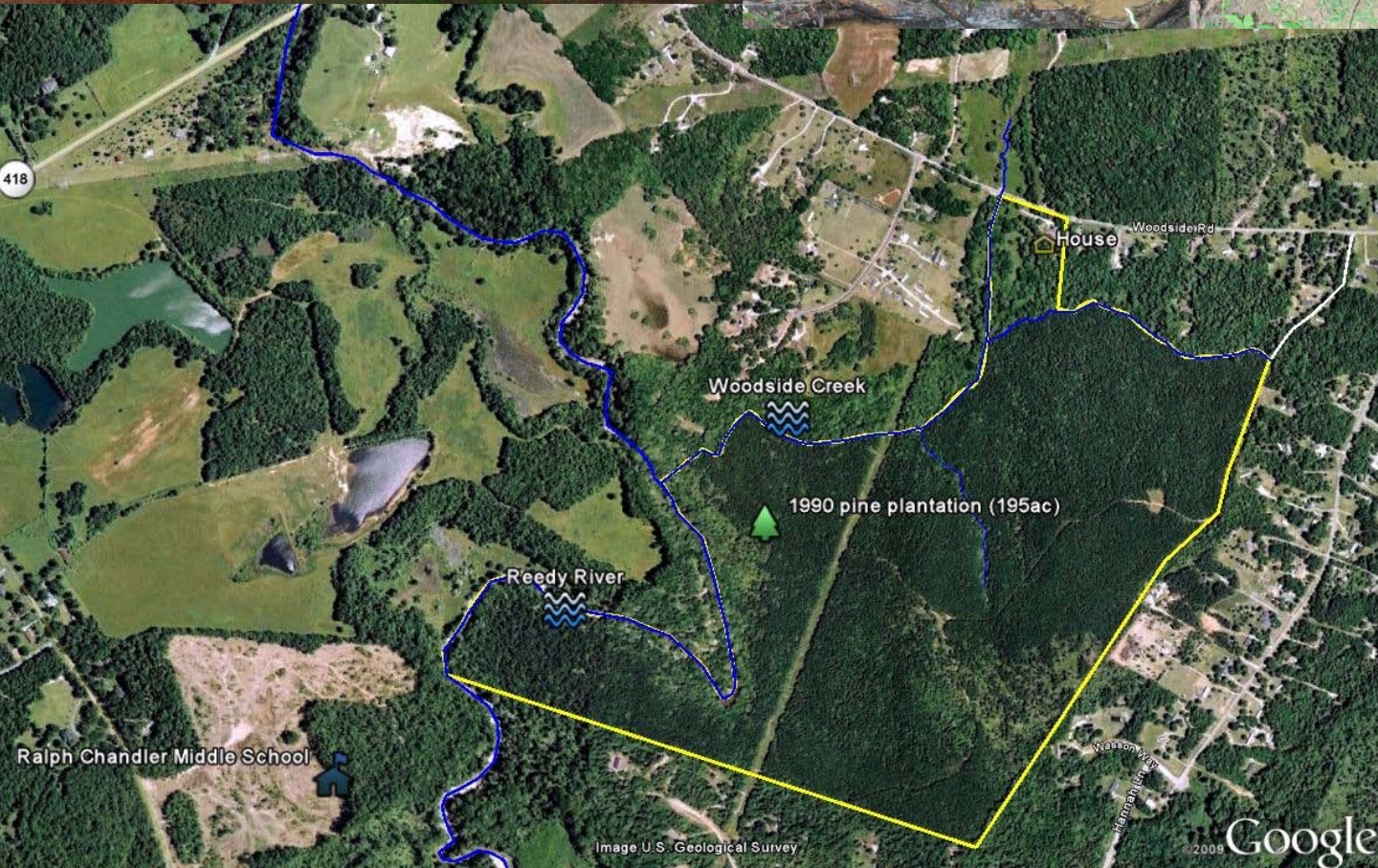
# Reedy River Timber Tract



Large food plots



Woodside Creek



Contact Jenks Patrick: 864-506-0416

[www.jenksincrealty.com](http://www.jenksincrealty.com)





# Reedy River Timber Tract (Overview of The Reedy)

**JenksIncRealty**



Greenville County, with the help of conservation groups, has embraced the Reedy as a natural asset to the region. The County is building a \$2.7 million park at Cedar Falls as well as creating multiple access points upstream of the park. The river can be paddled to enjoy the scenic views and light rapids. The “GCRD” marks indicate riverfront parcels of land that the Greenville County Recreational District has purchased for future public river access. The Reedy River Timber Tract is upstream of Cedar Falls Park and an ideal location for a conservation community that embraces the benefits of the Reedy and the improvements Greenville County is making.