



JenksIncRealty

Skyland Fields Farm

Timberland, Recreational, Farm, Residential

175 Skyland Drive, Pickens, SC 29671

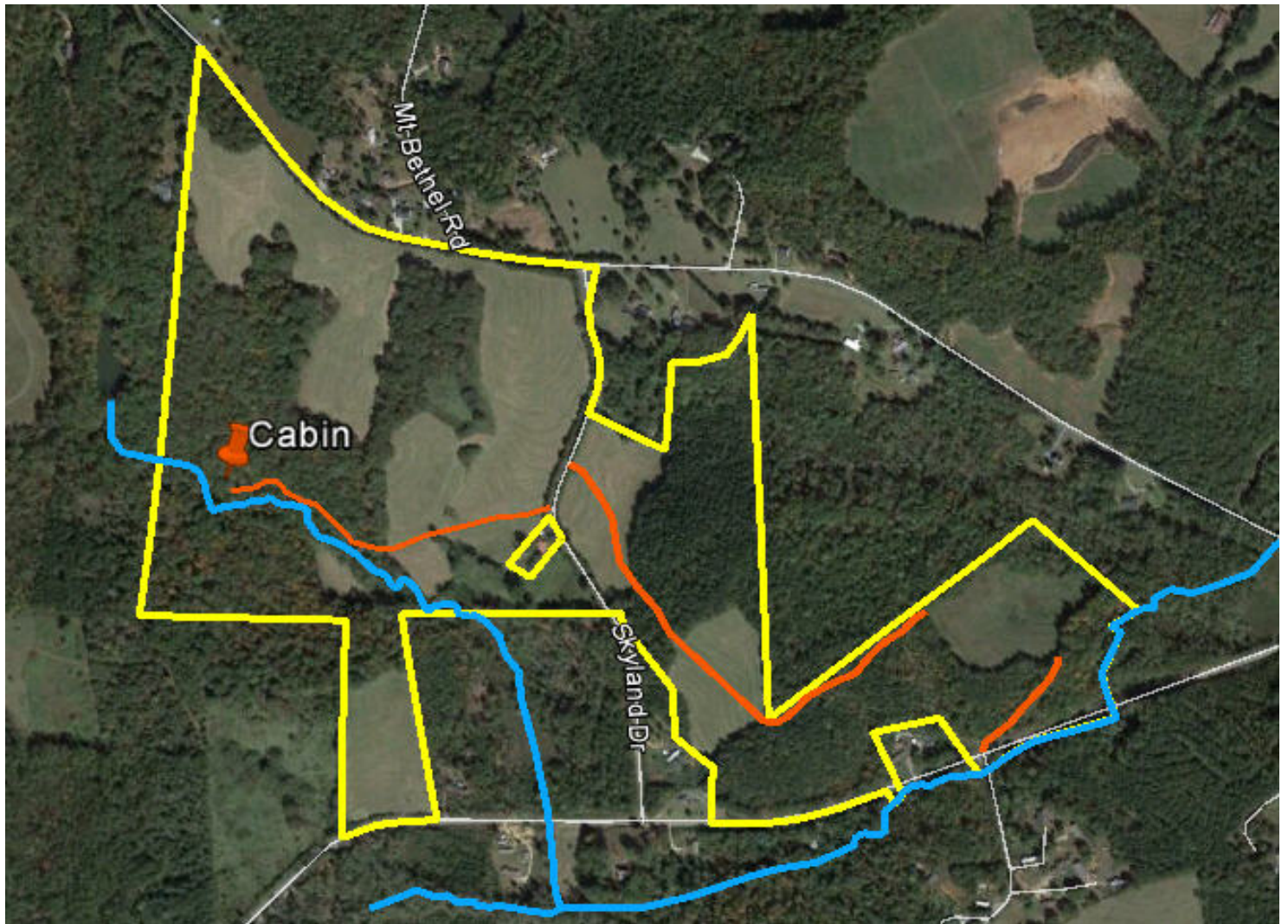
Price: \$790,000

Acreage: 138.43

County: Pickens

Parcel Tax ID: 4161-00-44-1285;4161-00-24-2049

MLS #: 1319830



John E. Stillwell

Cell: (864) 414-1879 Email: john@jirland.com

www.jenksincrealty.com 864-631-2770



JenksIncRealty

Skyland Fields Farm

Timberland, Recreational, Farm, Residential

This outstanding farm has open pasture, creeks, and woodlands! The property includes a two-story rustic cabin with utilities, mature hardwoods and planted pines, and pasture for horses or cattle! There is good hunting potential for deer, turkey, and doves.

The tract has over a mile of paved road frontage on Skyland Drive, Windmont Road, and Massingill Memorial Drive with multiple access points. If you would like to build a custom home, there are excellent building sites with mountain views!

There are approximately 57 acres of barbed wire fenced pasture, fertilized annually and ready for livestock, horses or hay/row crop production. The farm boasts mature hardwood woodlands, and 10 acres of 1999 planted pine. A bold creek flows through the property past the cabin, and West Fork Creek forms the southeast boundary.

The rustic 2-story cabin is tucked back in the hardwoods and fronts a beautiful creek! It is 1,300 square feet, with two bedrooms, two baths, a kitchen and breakfast nook, a rock fireplace, and was built with materials from the property. Power, city water, and septic are in place.

The location of this farm offers access to outdoor recreation galore (boating, fishing, hiking, camping), with Lakes Keowee and Jocassee, Table Rock State Park and the Jocassee Gorges all within 30 minutes! The already good hunting could be improved with addition of food plots, fruit and nut trees, planting a dove field, etc.

Pickens, SC (10 minutes) and Clemson, SC (30 minutes) are within easy commuting distance from this tract, and it is a 45 minute drive to downtown Greenville, SC.

The sellers are also offering this tract as two subdivided parcels using Skyland Drive as the dividing line (83.2 and 54.9 acre subdivide parcels). Contact the listing agent for more information.

To set up
a showing
call:

John E. Stillwell

Cell: (864) 414-1879 Email: john@jirland.com
www.jenksincrealty.com 864-631-2770



JenksIncRealty

Skyland Fields Farm

Timberland, Recreational, Farm, Residential



To set up
a showing
call:

John E. Stillwell

Cell: (864) 414-1879 Email: john@jirland.com
www.jenksincrealty.com 864-631-2770



JenksIncRealty

Skyland Fields Farm

Timberland, Recreational, Farm, Residential



To set up
a showing
call:

John E. Stillwell

Cell: (864) 414-1879 Email: john@jirland.com
www.jenksincrealty.com 864-631-2770